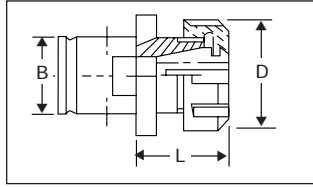


## BF ADAPTERS FOR RD/ER COLLETS

- Quick-change adapters are interchangeable with Bilz and other popular tapping systems
- Collets permit holding ANSI and metric sizes
- Can be used for tapping and drilling

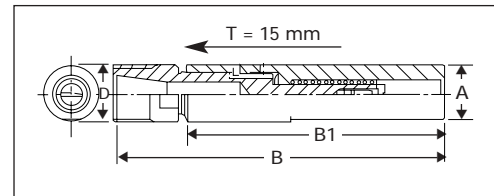


Part No.	Collet Series	Tap Range	B		L		D	
			(mm.)	(in.)	(mm.)	(in.)	(mm.)	(in.)
BF0 1113	RD 11	0-6 - 1/4"	13	0.51	28	1.10	19	0.75
BF1 1619	RD 16	0-6 - 1/2"	19	0.75	25	1.35	28	1.10
BF2 2531	RD 25	0-6 - 3/4"	31	1.22	34	1.34	42	1.65
BF3 3248	RD 32	0-6 - 15/16"	48	1.89	48	1.89	50	1.97
BF3 4048*	RD 40	0-6 - 1-1/8"	48	1.89			63	2.48

\*NOTE: Available upon special request.

## FLOATING TAP HOLDERS

- Permits tapping using RD/ER 16 collet system
- Ideally suited for applications on Swiss and Japanese automats and lathes



Part No.	A		B		B1		D		Tension		Nut	Wrench
	(mm.)	(in.)	(mm.)	(in.)	(mm.)	(in.)	(mm.)	(in.)	(mm.)	(in.)		
2016100	20	0.79	176	6.93	100	3.94	28	1.10	15	0.59	RD 16 H	GS 25
222016	22	0.88	135	5.31	100	3.94	28	1.10	15	0.59	RD 16 H	GS 25
0341660		3/4	136	5.35	60	2.36	28	1.10	15	0.59	RD 16 H	GS 25
0341665		3/4	100	3.94	65	2.56	22	0.87	15	0.59	RD 16 M	E 16 M
0341600		3/4	176	6.93	100	3.94	28	1.10	15	0.59	RD 16 H	GS 25