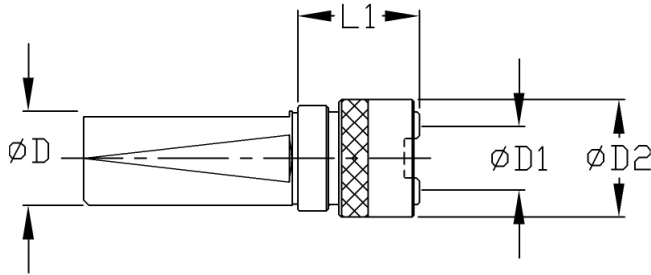




RT Rigid Tap Holders

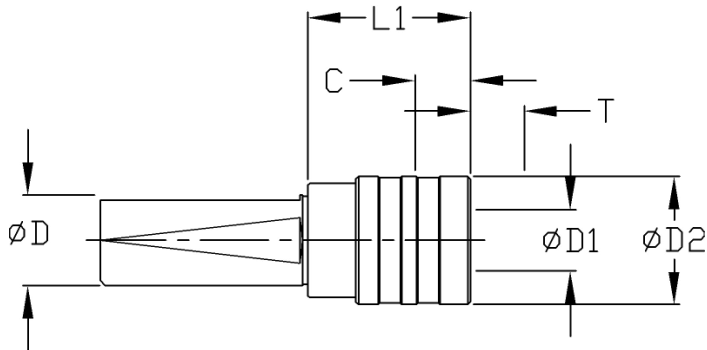
Straight Shanks for Collet, Lathe & End Mill Adapters



PART NUMBER	SHANK D	CAPACITY	ADAPTER SIZE	L1	D1	D2
S1-RT1-40	1" E/M SHANK	#6-9/16	1	1.57	0.75	1.34
S1-RT2-60	1" E/M SHANK	5/16-7/8	2	2.36	1.22	1.93
S1.1/4-RT3-95	1.1/4 E/M SHANK	3/4-1-3/8	3	3.74	1.89	2.89

TC Compensating Tap Holders

Tension & Compression Straight Shanks for Collet, Lathe & End Mill Adapters

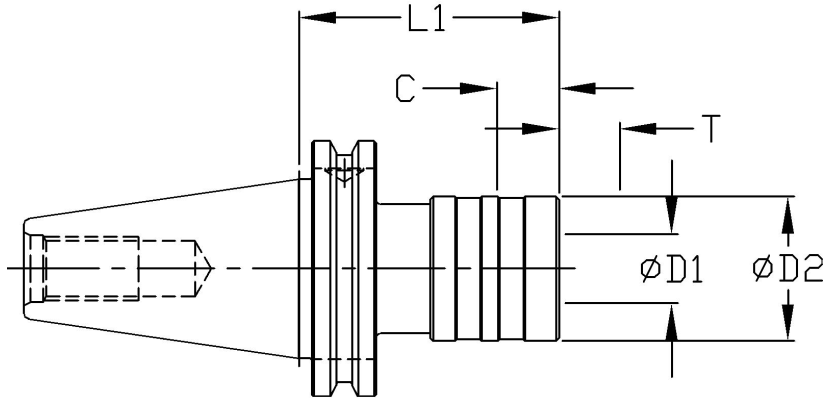


PART NUMBER	SHANK D	CAPACITY	ADAPTER SIZE	L1	D1	D2	T TENSION	C COMP.
S1-TC1-40	1" E/M SHANK	#6-9/16	1	1.57	0.75	1.42	0.30	0.30
S1-TC2-60	1" E/M SHANK	5/16-7/8	2	2.36	1.22	2.09	0.49	0.49
S1.1/4-TC3-100	1.1/4 E/M SHANK	3/4-1-3/8	3	3.94	1.89	3.07	0.79	0.79



TC Compensating Tap Holders

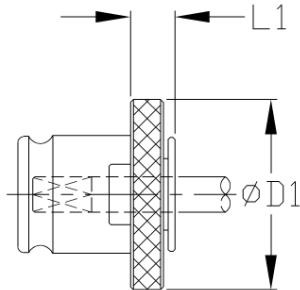
Tension & Compression CAT, BT & HSK



PART NUMBER	SHANK	CAPACITY	ADAPTER SIZE	L1	D1	D2	T TENSION	C COMP.
CAT40-TC1-59	CAT40	#6-9/16	1	2.32	0.75	1.42	0.30	0.30
CAT40-TC2-97		5/16-7/8	2	3.82	1.22	2.09	0.49	0.49
CAT40-TC3-149		3/4-1-3/8	3	5.87	1.89	3.07	0.79	0.79
CAT50-TC1-59	CAT50	#6-9/16	1	2.32	0.75	1.42	0.30	0.30
CAT50-TC2-97		5/16-7/8	2	3.82	1.22	2.09	0.49	0.49
CAT50-TC3-149		3/4-1-3/8	3	5.87	1.89	3.07	0.79	0.79
BT40-TC1-67	BT40	#6-9/16	1	2.64	0.75	1.42	0.30	0.30
BT40-TC2-94		5/16-7/8	2	3.70	1.22	2.09	0.49	0.49
BT40-TC3-167		3/4-1-3/8	3	6.57	1.89	3.07	0.79	0.79
HSK 63A-TC1-102	HSK 63A	#6-9/16	1	4.02	0.75	1.42	0.30	0.30
HSK 63A-TC2-137		5/16-7/8	2	5.39	1.22	2.09	0.49	0.49
HSK100A-TC1-105	HSK 100A	#6-9/16	1	4.13	0.75	1.42	0.30	0.30
HSK100A-TC2-140		5/16-7/8	2	5.51	1.22	2.09	0.49	0.49



RA - RIGID QC TAP ADAPTERS - ANSI TANG DRIVE



ADAPTER SIZE	D1	L1
1	1.18	0.28
2	1.89	0.43
3	2.76	0.55



TAP SIZE		SHANK		SQUARE		SIZE 1	SIZE 2	SIZE 3
INCH	METRIC	INCH	MM	INCH	MM			
#0 - #6	M1.6	0.141	3.58	0.110	2.79	RA1- NO.06		
#8	M4	0.168	4.27	0.131	3.33	RA1- NO.08		
#10	M4.5, M5	0.194	4.93	0.152	3.86	RA1- NO.10		
#12		0.220	5.59	0.165	4.19	RA1- NO.12		
1/4	M6, M6.3	0.255	6.48	0.191	4.85	RA1-1/4		
5/16	M7, M8	0.318	8.08	0.238	6.05	RA1-5/16	RA2-5/16	
3/8	M10	0.381	9.68	0.286	7.26	RA1-3/8	RA2-3/8	
7/16		0.323	8.20	0.242	6.15	RA1-7/16	RA2-7/16	
1/2	M12, M12.5	0.367	9.32	0.275	6.99	RA1-1/2	RA2-1/2	
9/16	M14	0.429	10.90	0.322	8.18	RA1-9/16	RA2-9/16	RA3-9/16
5/8	M16	0.480	12.19	0.360	9.14		RA2-5/8	RA3-5/8
11/16	M18	0.542	13.77	0.406	10.31		RA2-11/16	
3/4		0.590	14.99	0.442	11.23		RA2-3/4	RA3-3/4
13/16	M20	0.652	16.56	0.489	12.42		RA2-13/16	RA3-13/16
7/8	M22	0.697	17.70	0.523	13.28		RA2-7/8	RA3-7/8
15/16	M24	0.760	19.30	0.570	14.48			RA3-15/16
1"	M25	0.800	20.32	0.600	15.24			RA3-1
1-1/16 - 1-1/8	M27	0.896	22.76	0.672	17.07			RA3-1.1/8
1-3/16 - 1-1/4	M30	1.021	25.93	0.766	19.46			RA3-1.1/4
1-5/16 - 1-3/8	M33	1.108	28.14	0.831	21.11			RA3-1.3/8
PIPE TAP								
1/8 PIPE SS		0.313	7.95	0.234	5.94	RA1-1/8P		
1/8 PIPE LS		0.438	11.13	0.328	8.33	RA1-1/8P2		
1/4 PIPE		0.563	14.30	0.421	10.69		RA2-1/4P	
3/8 PIPE		0.700	17.78	0.531	13.49		RA2-3/8P	RA3-3/8P
1/2 PIPE		0.688	17.48	0.515	13.08		RA2-1/2P	RA3-1/2P
3/4 PIPE		0.906	23.01	0.679	17.25			RA3-3/4P
1" PIPE		1.125	28.58	0.843	21.41			RA3-1P