



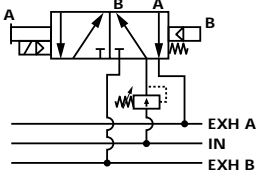
Section 6

Pressure regulators

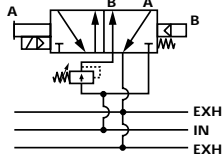
Manual adjust

Series

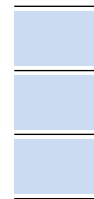
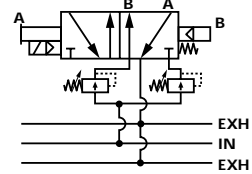
Single regulator
Single pressure



Single regulator
Dual pressure



Dual regulator
Dual pressure

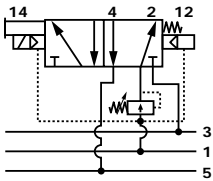


PR82A

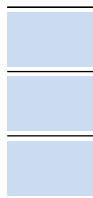
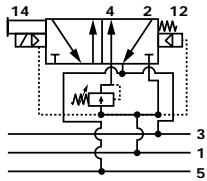
PR63D

PR65C

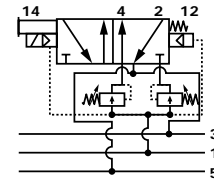
Single regulator
Single pressure



Single regulator
Dual pressure



Dual regulator
Dual pressure

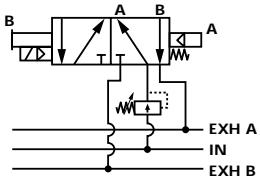


PRA1A

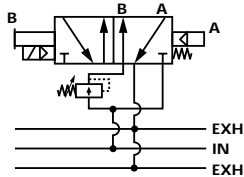
PRA2D

PRA3C

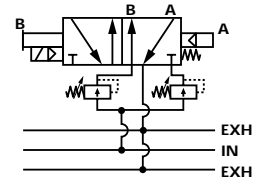
Single regulator
Single pressure



Single regulator
Dual pressure



Dual regulator
Dual pressure



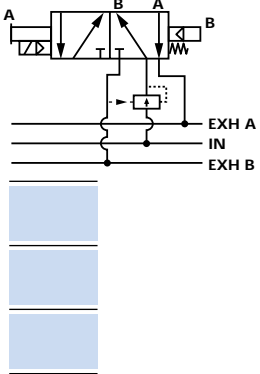
PR125A

PR250B

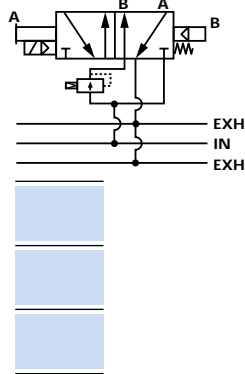
Air adjust

Series

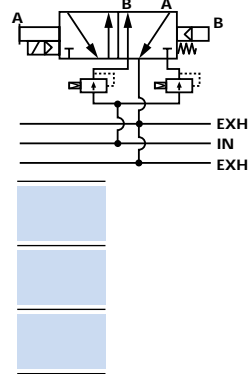
Single regulator
Single pressure



Single regulator
Dual pressure



Dual regulator
Dual pressure

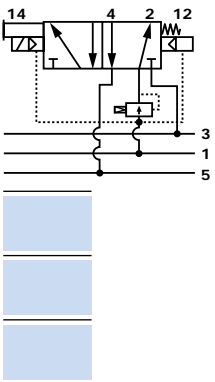


PR82A

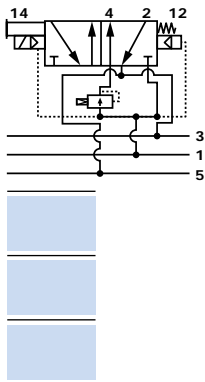
PR63D

PR65C

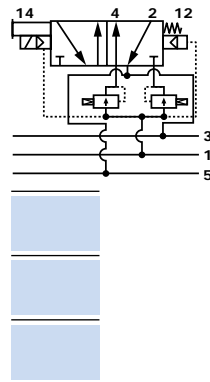
Single regulator
Single pressure



Single regulator
Dual pressure



Dual regulator
Dual pressure

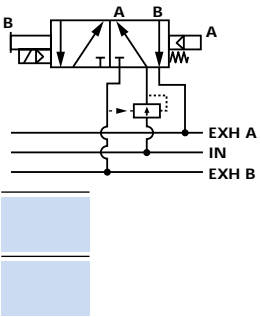


PRA1A

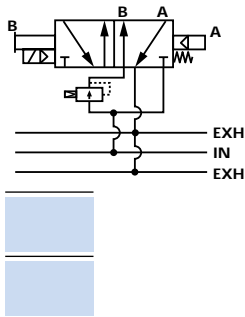
PRA2D

PRA3C

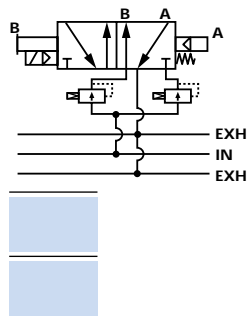
Single regulator
Single pressure



Single regulator
Dual pressure



Dual regulator
Dual pressure



PR125A

PR250B

Sandwich pressure regulator with manual adjust locking knob.

OPERATIONAL BENEFITS

1. Easy mounting : saves on installation costs in comparison with inline regulators.
2. Allows to have compact, all-included units.
3. Large orifice provides high flow.
4. Various functions available.
5. Simple, reliable and solid design.



HOW TO ORDER

REGULATORS FOR "PLUG-IN" VALVES

Gauges	Single pressure Regulator A end Same regulated pressure to ports A and B	Dual pressure Regulator A end Regulated pressure to port A *	Dual pressure Regulator B end Regulated pressure to port B *	Dual pressure Dual regulator Two regulated pressures to ports A and B *
No gauge	PR82A-GADA	PR82A-GCDA	PR82A-GBDA	PR82A-GDDA
Gauge parallel to regulator	PR82A-GACA	PR82A-GCCA	PR82A-GBCA	PR82A-GDCA
Gauge perpendicular to regulator	PR82A-GABA	PR82A-GCBA	PR82A-GBBA	PR82A-GDBA

REGULATORS FOR "NON PLUG-IN" AND REMOTE AIR VALVES

Gauges	Single pressure Regulator A end Same regulated pressure to ports A and B	Dual pressure Regulator A end Regulated pressure to port A *	Dual pressure Regulator B end Regulated pressure to port B *	Dual pressure Dual regulator Two regulated pressures to ports A and B *
No gauge	PR82A-HADA	PR82A-HCDA	PR82A-HBDA	PR82A-HDDA
Gauge parallel to regulator	PR82A-HACA	PR82A-HCCA	PR82A-HBCA	PR82A-HDCA
Gauge perpendicular to regulator	PR82A-HABA	PR82A-HCBA	PR82A-HBBA	PR82A-HDBA

Note : regulating range for above models is 0-120 PSI. For other ranges see technical data page.

* To be used with dual pressure valves.

ADJUSTMENT OPTIONS

PR82A-xxxx

- Replace by A for "plug-in" with slotted stem adjustment.
- Replace by B for "non plug-in" with slotted stem adjustment.
- Replace by K for "plug-in" with locking slotted stem adjustment.
- Replace by L for "non plug-in" with locking slotted stem adjustment.

****SELECTOR OPTIONS** selects pressure to inlet of adjacent valve.

PR82A-xxxx

- Replace by S for dual regulators.
- Replace by T for regulator on "B" end with by-pass on "A" end.

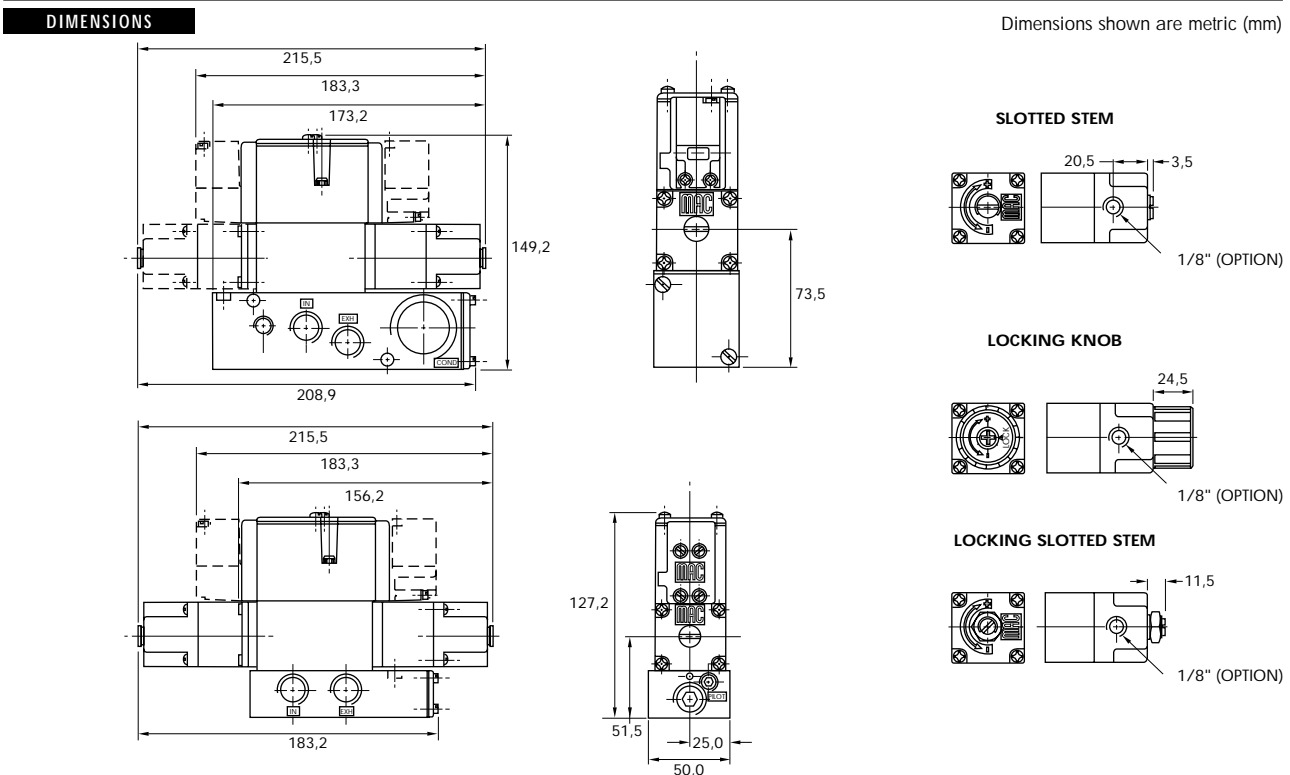
** This option must be used with a single pressure valve and selector manifold base.

TECHNICAL DATA	
Fluid :	Compressed air, inert gases
Pressure range :	0 to 150 PSI
Regulating range :	0 to 120 PSI (other ranges see below)
Lubrication :	Not required, if used select a medium aniline point lubricant (between 180°F to 210°F)
Filtration :	40 μ
Temperature range :	0°F to 120°F (-18°C to 50°C)
Flow :	(1.08 C _v)

- Spare parts :
- Pressure regulator (less sandwich block) : PR82A-JOAA (KNOB), PR82A-COAA (SLOTTED STEM), PR82A-MOAA (LOCKING SLOTTED STEM).
 - Gauges : N-82016-01 (0-120 PSI perpendicular)
N-82016-02 (0-120 PSI parallel)
N-82016-03 (0-80 PSI perpendicular)
N-82016-04 (0-80 PSI parallel)
N-82016-05 (0-30 PSI perpendicular)
N-82016-06 (0-30 PSI parallel)

Regulating range options : PR82A-XXXA

- Replace by B - 0 to 80 PSI
- Replace by C - 0 to 30 PSI
- Replace by D - 0 to 120 PSI on "A" end
- 0 to 80 PSI on "B" end
- Replace by E - 0 to 120 PSI on "B" end
- 0 to 80 PSI on "A" end
- Replace by F - 0 to 120 PSI on "A" end
- 0 to 30 PSI on "B" end
- Replace by G - 0 to 120 PSI on "B" end
- 0 to 30 PSI on "A" end
- Replace by H - 0 to 80 PSI on "A" end
- 0 to 30 PSI on "B" end
- Replace by J - 0 to 80 PSI on "B" end
- 0 to 30 PSI on "A" end



Sandwich pressure regulator with air pilot adjust.

OPERATIONAL BENEFITS

1. Easy mounting : saves on installation costs in comparison with inline regulators.
2. Allows to have compact, all-included units.
3. Large orifice provides high flow.
4. Various functions available.
5. Simple, reliable and solid design.



HOW TO ORDER

REGULATORS FOR "PLUG-IN" VALVES

Gauges	Single pressure Regulator A end Same regulated pressure to ports A and B	Dual pressure Regulator A end Regulated pressure to port A *	Dual pressure Regulator B end Regulated pressure to port B *	Dual pressure Dual regulator Two regulated pressures to ports A and B *
No gauge	PR82A-DADA	PR82A-DCDA	PR82A-DBDA	PR82A-DDDA
Gauge parallel to regulator	PR82A-DACA	PR82A-DCCA	PR82A-DBCA	PR82A-DDCA
Gauge perpendicular to regulator	PR82A-DABA	PR82A-DCBA	PR82A-DBBA	PR82A-DDBA

REGULATORS FOR "NON PLUG-IN" AND REMOTE AIR VALVES

Gauges	Single pressure Regulator A end Same regulated pressure to ports A and B	Dual pressure Regulator A end Regulated pressure to port A *	Dual pressure Regulator B end Regulated pressure to port B *	Dual pressure Dual regulator Two regulated pressures to ports A and B *
No gauge	PR82A-EADA	PR82A-ECDA	PR82A-EBDA	PR82A-EDDA
Gauge parallel to regulator	PR82A-EACA	PR82A-ECCA	PR82A-EBCA	PR82A-EDCA
Gauge perpendicular to regulator	PR82A-EABA	PR82A-ECBA	PR82A-EBBA	PR82A-EDBA

* To be used with dual pressure valves.

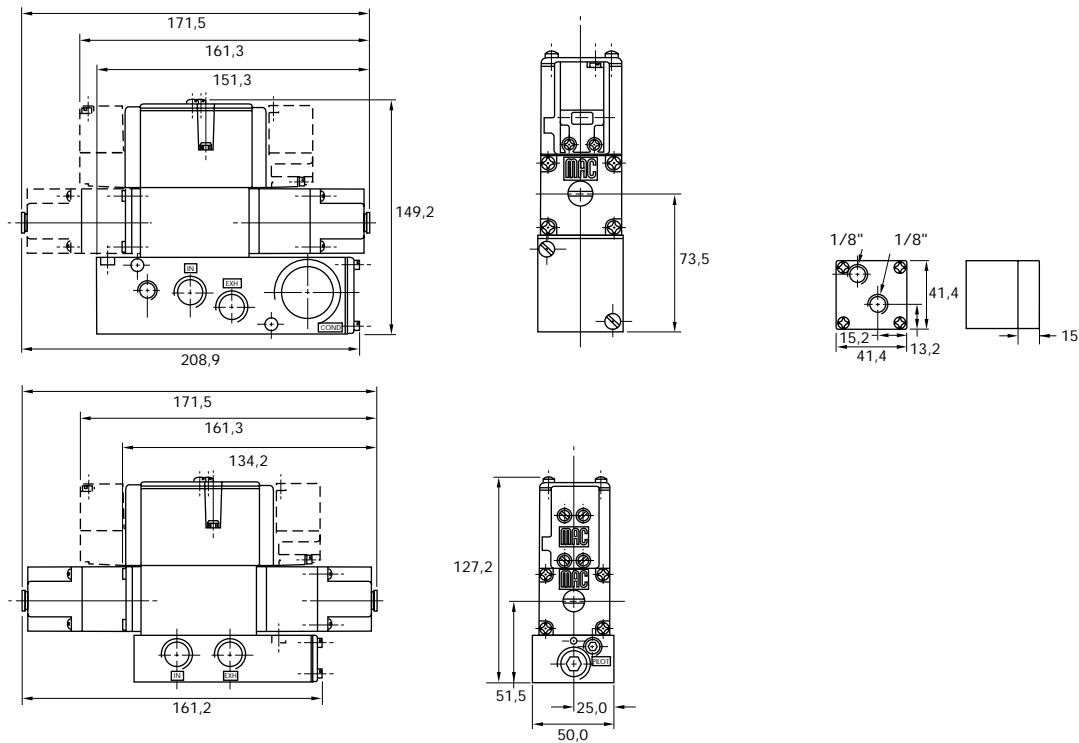
TECHNICAL DATA

Fluid :	Compressed air, inert gases
Pressure range :	0 to 150 PSI
Regulating range :	0 to 120 PSI
Lubrication :	Not required, if used select a medium aniline point lubricant (between 180°F to 210°F)
Filtration :	40 μ
Temperature range :	0°F to 120°F (-18°C to 50°C)
Flow :	(1.08 C _v)

- Spare parts :
- Pressure regulator (less sandwich block) : PR82A-FOAA.
 - Gauges : N-82016-01 (0-120 PSI perpendicular)
N-82016-02 (0-120 PSI parallel)

DIMENSIONS

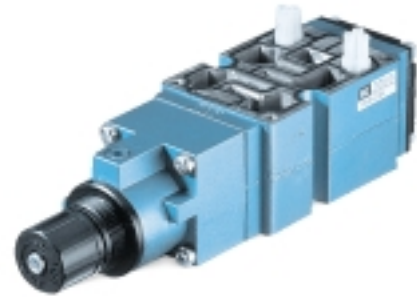
Dimensions shown are metric (mm)



Sandwich pressure regulator with manual adjust knob.

OPERATIONAL BENEFITS

1. Easy mounting : saves on installation costs in comparison with inline regulators.
2. Allows to have compact, all-included units.
3. Large orifice provides high flow.
4. Various functions available.
5. Simple, reliable and solid design.



HOW TO ORDER

REGULATORS FOR "PLUG-IN" VALVES

Gauges	Single pressure Regulator A end Same regulated pressure to ports A and B	Single pressure Regulator B end Same regulated pressure to ports A and B	Dual pressure Regulator A end Regulated pressure to port B *	Dual pressure Regulator B end Regulated pressure to port A *	Dual pressure Dual regulator Two regulated pressures to ports A and B *
No gauge	PR63D-22AA	PR63D-21AA	PR63D-24AA	PR63D-23AA	PR63D-25AA
Glycerine filled gauge on regulator(s)	PR63D-22BA	PR63D-21BA	PR63D-24BA	PR63D-23BA	PR63D-25DA
Glycerine filled gauge opposite to regulator	PR63D-22CA	PR63D-21CA	PR63D-24CA	PR63D-23CA	-----
Non-filled gauge on regulator(s)	PR63D-22FA	PR63D-21FA	PR63D-24FA	PR63D-23FA	PR63D-25HA
Non-filled gauge opposite to regulator	PR63D-22GA	PR63D-21GA	PR63D-24GA	PR63D-23GA	-----

Note : above models are coded for use with double solenoid plug-in valves.

REGULATORS FOR "NON PLUG-IN" AND REMOTE AIR VALVES

Gauges	Single pressure Regulator A end Same regulated pressure to ports A and B	Single pressure Regulator B end Same regulated pressure to ports A and B	Dual pressure Regulator A end Regulated pressure to port B *	Dual pressure Regulator B end Regulated pressure to port A *	Dual pressure Dual regulator Two regulated pressures to ports A and B *
No gauge	PR63D-32AA	PR63D-31AA	PR63D-34AA	PR63D-33AA	PR63D-35AA
Glycerine filled gauge on regulator(s)	PR63D-32BA	PR63D-31BA	PR63D-34BA	PR63D-33BA	PR63D-35DA
Glycerine filled gauge opposite to regulator	PR63D-32CA	PR63D-31CA	PR63D-34CA	PR63D-33CA	-----
Non-filled gauge on regulator(s)	PR63D-32FA	PR63D-31FA	PR63D-34FA	PR63D-33FA	PR63D-35HA
Non-filled gauge opposite to regulator	PR63D-32GA	PR63D-31GA	PR63D-34GA	PR63D-33GA	-----

Note : regulating range for above models is 0-150 PSI. For other ranges see technical data page.

* To be used with dual pressure valves (manifolds only).

PLUG-IN OPTIONS

PR63D-xxxx
 ↳ - Replace by 1 for single solenoid plug-in with knob adjustment.

ADJUSTMENT OPTIONS

PR63D-xxxx
 ↳ - Replace by A for slotted stem adjustment for single solenoid plug-in.
 ↳ - Replace by B for slotted stem adjustment for double solenoid plug-in.
 ↳ - Replace by C for slotted stem adjustment for non plug-in valves.
 ↳ - Replace by E for slotted stem with locknut for single solenoid plug-in.
 ↳ - Replace by F for slotted stem with locknut for double solenoid plug-in.
 ↳ - Replace by G for slotted stem with locknut for non plug-in valves.

TECHNICAL DATA

Fluid :	Compressed air, inert gases
Pressure range :	0 to 150 PSI
Regulating range :	0 to 150 PSI (other ranges see below)
Lubrication :	Not required, if used select a medium aniline point lubricant (between 180°F to 210°F)
Filtration :	40 μ
Temperature range :	0°F to 120°F (-18°C to 50°C)
Flow :	(2.4 C _v)

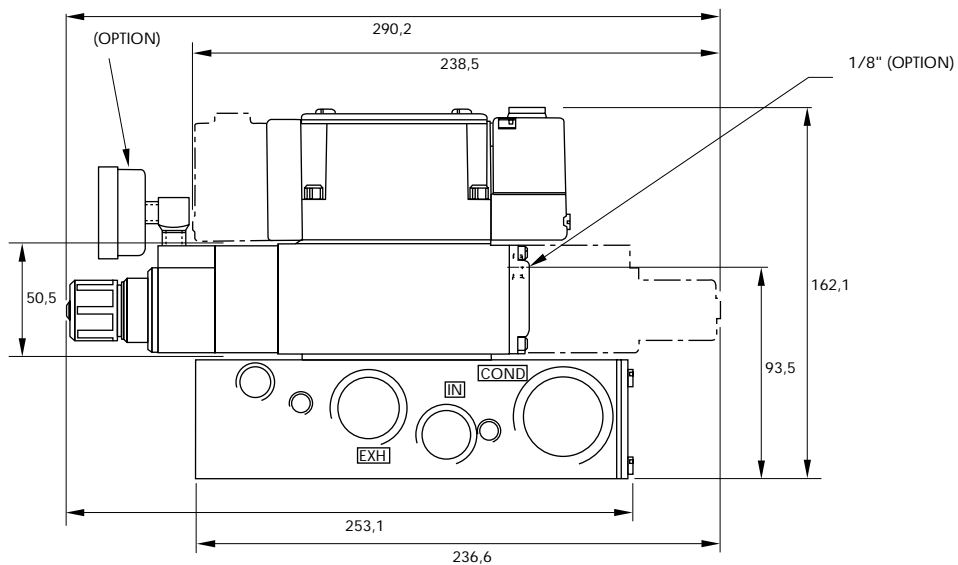
- Spare parts :
- Pressure regulator (less sandwich block) : PR63D-41AA (KNOB), PR63D-D1AA (SLOTTED STEM), PR63D-H1AA (SLOTTED STEM WITH LOCKNUT).
 - Gauges : • Glycerine filled : N-62015-01
• Non filled : N-62016-01

Regulating range options : PR63D-XXXA

- Replace by B - 0 to 100 PSI
- Replace by C - 0 to 45 PSI

DIMENSIONS

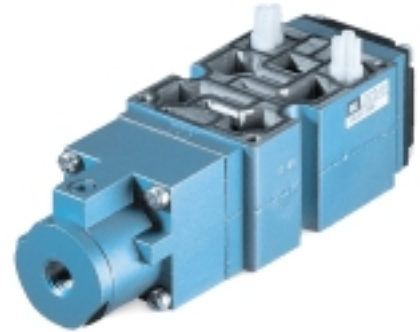
Dimensions shown are metric (mm)



Sandwich pressure regulator with air pilot adjust.

OPERATIONAL BENEFITS

1. Easy mounting : saves on installation costs in comparison with inline regulators.
2. Allows to have compact, all-included units.
3. Large orifice provides high flow.
4. Various functions available.
5. Simple, reliable and solid design.



HOW TO ORDER

REGULATORS FOR "PLUG-IN" VALVES

Gauges	Single pressure Regulator A end Same regulated pressure to ports A and B	Single pressure Regulator B end Same regulated pressure to ports A and B	Dual pressure Regulator A end Regulated pressure to port B *	Dual pressure Regulator B end Regulated pressure to port A *	Dual pressure Dual regulator Two regulated pressures to ports A and B *
No gauge	PR63D-2BAA	PR63D-2AAA	PR63D-2DAA	PR63D-2CAA	PR63D-2EAA
Glycerine filled gauge on regulator(s)	PR63D-2BBA	PR63D-2ABA	PR63D-2DBA	PR63D-2CBA	PR63D-2EDA
Glycerine filled gauge opposite to regulator	PR63D-2BCA	PR63D-2ACA	PR63D-2DCA	PR63D-2CCA	-----
Non-filled gauge on regulator(s)	PR63D-2BFA	PR63D-2AFA	PR63D-2DFA	PR63D-2CFA	PR63D-2EHA
Non-filled gauge opposite to regulator	PR63D-2BGA	PR63D-2AGA	PR63D-2DGA	PR63D-2CGA	-----


Note : above models are coded for use with double solenoid plug-in valves.

REGULATORS FOR "NON PLUG-IN" AND REMOTE AIR VALVES

Gauges	Single pressure Regulator A end Same regulated pressure to ports A and B	Single pressure Regulator B end Same regulated pressure to ports A and B	Dual pressure Regulator A end Regulated pressure to port B *	Dual pressure Regulator B end Regulated pressure to port A *	Dual pressure Dual regulator Two regulated pressures to ports A and B *
No gauge	PR63D-3BAA	PR63D-3AAA	PR63D-3DAA	PR63D-3CAA	PR63D-3EAA
Glycerine filled gauge on regulator(s)	PR63D-3BBA	PR63D-3ABA	PR63D-3DBA	PR63D-3CBA	PR63D-3EDA
Glycerine filled gauge opposite to regulator	PR63D-3BCA	PR63D-3ACA	PR63D-3DCA	PR63D-3CCA	-----
Non-filled gauge on regulator(s)	PR63D-3BFA	PR63D-3AFA	PR63D-3DFA	PR63D-3CFA	PR63D-3EHA
Non-filled gauge opposite to regulator	PR63D-3BGA	PR63D-3AGA	PR63D-3DGA	PR63D-3CGA	-----

* To be used with dual pressure valves (available only on manifolds).

PLUG-IN OPTIONS

PR63D-xxxx
 - Replace by 1 for single solenoid plug-in.

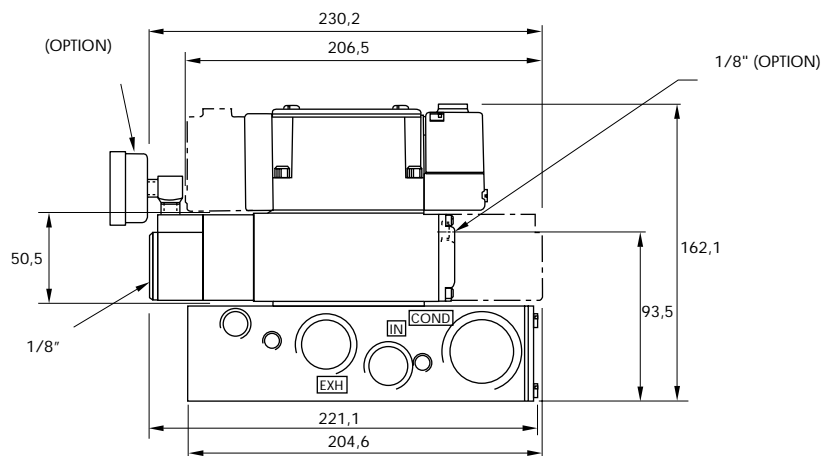
TECHNICAL DATA

Fluid :	Compressed air, inert gases
Pressure range :	0 to 150 PSI
Regulating range :	0 to 150 PSI
Lubrication :	Not required, if used select a medium aniline point lubricant (between 180°F to 210°F)
Filtration :	40 μ
Temperature range :	0°F to 120°F (-18°C to 50°C)
Flow (at 6 bar, ΔP=1bar) :	(2.4 C _v)

- Spare parts :
- Pressure regulator (less sandwich block) : PR63D-4AAA.
 - Gauges : • Glycerine filled : N-62015-01
• Non filled : N-62016-01

DIMENSIONS

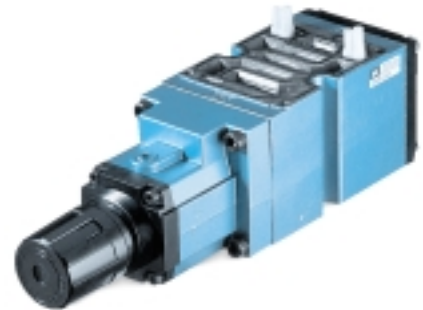
Dimensions shown are metric (mm)



Sandwich pressure regulator with manual adjust knob.

OPERATIONAL BENEFITS

1. Easy mounting : saves on installation costs in comparison with inline regulators.
2. Allows to have compact, all-included units.
3. Large orifice provides high flow.
4. Various functions available.
5. Simple, reliable and solid design.



HOW TO ORDER

REGULATORS FOR "PLUG-IN" VALVES

Gauges	Single pressure Regulator A end Same regulated pressure to ports A and B	Single pressure Regulator B end Same regulated pressure to ports A and B	Dual pressure Regulator A end Regulated pressure to port B	Dual pressure Regulator B end Regulated pressure to port A	Dual pressure Dual regulator Two regulated pressures to ports A and B
No gauge	PR65C-22AA	PR65C-21AA	PR65C-24AA	PR65C-23AA	PR65C-25AA
Glycerine filled gauge on regulator(s)	PR65C-22BA	PR65C-21BA	PR65C-24BA	PR65C-23BA	PR65C-25DA
Glycerine filled gauge opposite to regulator	PR65C-22CA	PR65C-21CA	PR65C-24CA	PR65C-23CA	-----
Non-filled gauge on regulator(s)	PR65C-22FA	PR65C-21FA	PR65C-24FA	PR65C-23FA	PR65C-25HA
Non-filled gauge opposite to regulator	PR65C-22GA	PR65C-21GA	PR65C-24GA	PR65C-23GA	-----

Note : above models are coded for use with double solenoid plug-in valves.

REGULATORS FOR "NON PLUG-IN" AND REMOTE AIR VALVES

Gauges	Single pressure Regulator A end Same regulated pressure to ports A and B	Single pressure Regulator B end Same regulated pressure to ports A and B	Dual pressure Regulator A end Regulated pressure to port B	Dual pressure Regulator B end Regulated pressure to port A	Dual pressure Dual regulator Two regulated pressures to ports A and B
No gauge	PR65C-32AA	PR65C-31AA	PR65C-34AA	PR65C-33AA	PR65C-35AA
Glycerine filled gauge on regulator(s)	PR65C-32BA	PR65C-31BA	PR65C-34BA	PR65C-33BA	PR65C-35DA
Glycerine filled gauge opposite to regulator	PR65C-32CA	PR65C-31CA	PR65C-34CA	PR65C-33CA	-----
Non-filled gauge on regulator(s)	PR65C-32FA	PR65C-31FA	PR65C-34FA	PR65C-33FA	PR65C-35HA
Non-filled gauge opposite to regulator	PR65C-32GA	PR65C-31GA	PR65C-34GA	PR65C-33GA	-----

Note : regulating range for above models is 0-150 PSI.
For other ranges see technical data page.

ADJUSTMENT OPTIONS

PLUG-IN OPTIONS

PR65C-xxxx
- Replace by 1 for single solenoid plug-in with knob adjustment.

PR65C-xxxx
- Replace by A for slotted stem adjustment for single solenoid plug-in.
- Replace by B for slotted stem adjustment for double solenoid plug-in.
- Replace by C for slotted stem adjustment for non plug-in valves.
- Replace by E for slotted stem with locknut for single solenoid plug-in.
- Replace by F for slotted stem with locknut for double solenoid plug-in.
- Replace by G for slotted stem with locknut for non plug-in valves.

TECHNICAL DATA

Fluid :	Compressed air, inert gases
Pressure range :	0 to 150 PSI
Regulating range :	0 to 150 PSI (other ranges see below)
Lubrication :	Not required, if used select a medium aniline point lubricant (between 180°F to 210°F)
Filtration :	40 μ
Temperature range :	0°F to 120°F (-18°C to 50°C)
Flow (at 6 bar, ΔP=1bar) :	(4.0 C _v)

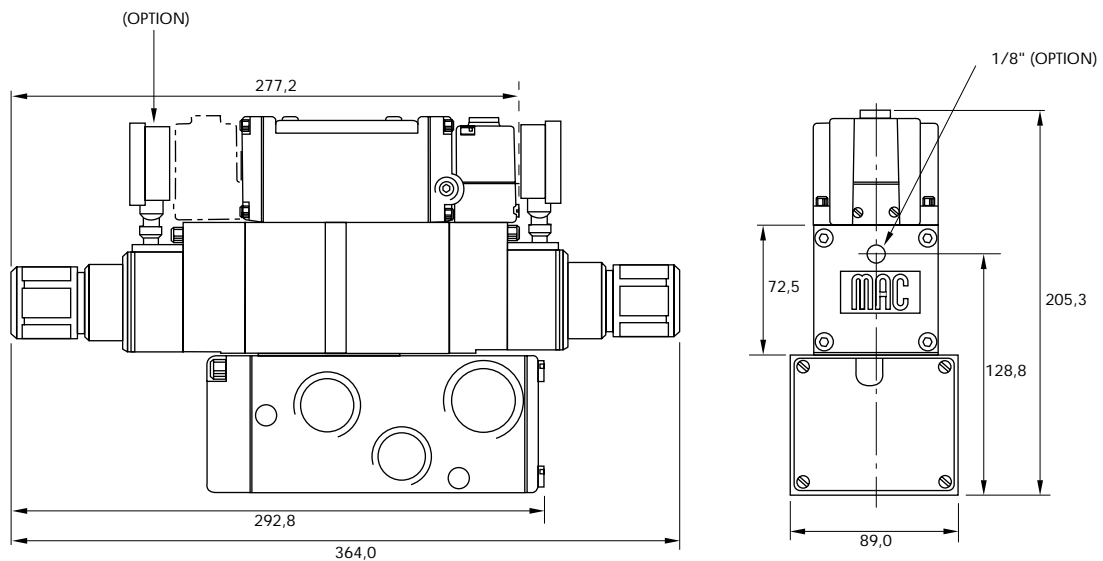
- Spare parts :
- Pressure regulator (less sandwich block) : PR65C-41AA (KNOB), PR65C-D1AA (SLOTTED STEM), PR65C-H1AA (SLOTTED STEM WITH LOCKNUT).
 - Gauges : • Glycerine filled : N-62015-01
• Non filled : N-62016-01

Regulating range options : PR65C-XXXA

- Replace by B - 0 to 100 PSI
- Replace by C - 0 to 45 PSI

DIMENSIONS

Dimensions shown are metric (mm)



Sandwich pressure regulator with air pilot adjust.

OPERATIONAL BENEFITS

1. Easy mounting : saves on installation costs in comparison with inline regulators.
2. Allows to have compact, all-included units.
3. Large orifice provides high flow.
4. Various functions available.
5. Simple, reliable and solid design.



HOW TO ORDER

REGULATORS FOR "PLUG-IN" VALVES


Gauges	Single pressure Regulator A end Same regulated pressure to ports A and B	Single pressure Regulator B end Same regulated pressure to ports A and B	Dual pressure Regulator A end Regulated pressure to port B	Dual pressure Regulator B end Regulated pressure to port A	Dual pressure Dual regulator Two regulated pressures to ports A and B
No gauge	PR65C-2BAA	PR65C-2AAA	PR65C-2DAA	PR65C-2CAA	PR65C-2EAA
Glycerine filled gauge on regulator(s)	PR65C-2BBA	PR65C-2ABA	PR65C-2DBA	PR65C-2CBA	PR65C-2EDA
Glycerine filled gauge opposite to regulator	PR65C-2BCA	PR65C-2ACA	PR65C-2DCA	PR65C-2CCA	-----
Non-filled gauge on regulator(s)	PR65C-2BFA	PR65C-2AFA	PR65C-2DFA	PR65C-2CFA	PR65C-2EHA
Non-filled gauge opposite to regulator	PR65C-2BGA	PR65C-2AGA	PR65C-2DGA	PR65C-2CGA	-----

Note : above models are coded for use with double solenoid plug-in valves.

REGULATORS FOR "NON PLUG-IN" AND REMOTE AIR VALVES

Gauges	Single pressure Regulator A end Same regulated pressure to ports A and B	Single pressure Regulator B end Same regulated pressure to ports A and B	Dual pressure Regulator A end Regulated pressure to port B	Dual pressure Regulator B end Regulated pressure to port A	Dual pressure Dual regulator Two regulated pressures to ports A and B
No gauge	PR65C-3BAA	PR65C-3AAA	PR65C-3DAA	PR65C-3CAA	PR65C-3EAA
Glycerine filled gauge on regulator(s)	PR65C-3BBA	PR65C-3ABA	PR65C-3DBA	PR65C-3CBA	PR65C-3EDA
Glycerine filled gauge opposite to regulator	PR65C-3BCA	PR65C-3ACA	PR65C-3DCA	PR65C-3CCA	-----
Non-filled gauge on regulator(s)	PR65C-3BFA	PR65C-3AFA	PR65C-3DFA	PR65C-3CFA	PR65C-3EHA
Non-filled gauge opposite to regulator	PR65C-3BGA	PR65C-3AGA	PR65C-3DGA	PR65C-3CGA	-----

PLUG-IN OPTIONS

PR65C-xxxx

 - Replace by 1 for single solenoid plug-in.

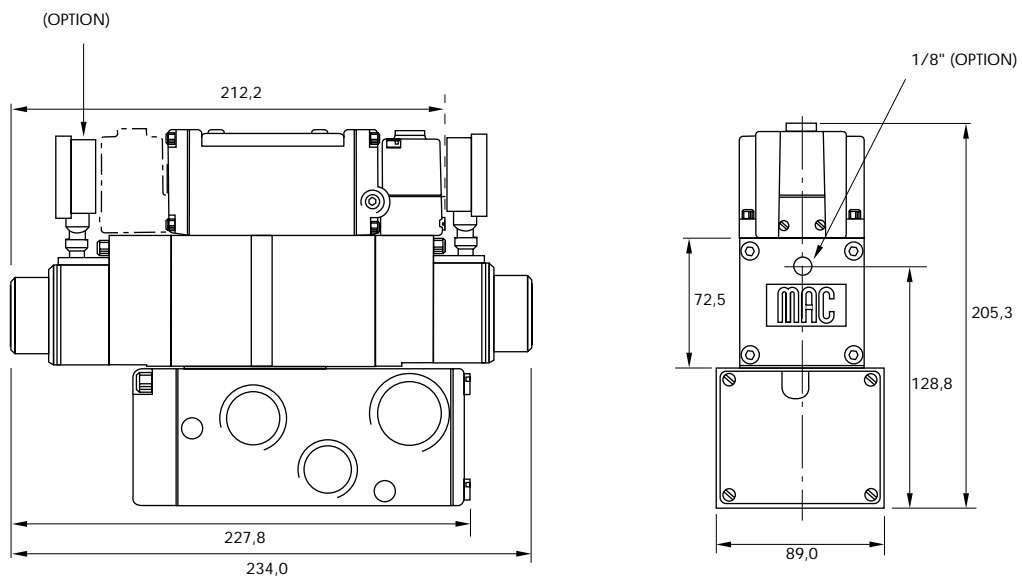
TECHNICAL DATA

Fluid :	Compressed air, inert gases
Pressure range :	0 to 150 PSI
Regulating range :	0 to 150 PSI
Lubrication :	Not required, if used select a medium aniline point lubricant (between 180°F to 210°F)
Filtration :	40 μ
Temperature range :	0°F to 120°F (-18°C to 50°C)
Flow (at 6 bar, ΔP=1bar) :	(4.0 C _v)

- Spare parts :
- Pressure regulator (less sandwich block) : PR65C-4AAA.
 - Gauges : • Glycerine filled : N-62015-01
• Non filled : N-62016-01

DIMENSIONS

Dimensions shown are metric (mm)



Sandwich pressure regulator with manual adjust knob.

OPERATIONAL BENEFITS

1. Easy mounting : saves on installation costs in comparison with inline regulators.
2. Allows to have compact, all-included units.
3. Large orifice provides high flow.
4. Various functions available.
5. Simple, reliable and solid design.



HOW TO ORDER

INTERNAL PILOT

Gauges	Single pressure Regulator 14 end Same regulated pressure to ports 2 and 4	Single pressure Regulator 12 end Same regulated pressure to ports 2 and 4	Dual pressure Regulator 14 end Regulated pressure to port 4 *	Dual pressure Regulator 12 end Regulated pressure to port 2 *	Dual pressure Dual regulator Two regulated pressures to ports 2 and 4 *
No gauge	PRA1A-GAAA	PRA1A-GCAA	PRA1A-GBAA	PRA1A-GDAA	PRA1A-GEAA
Gauge parallel to regulator(s)	PRA1A-GADA	PRA1A-GCDA	PRA1A-GBDA	PRA1A-GDDA	PRA1A-GEEA
Gauge perpendicular to regulator(s)	PRA1A-GABA	PRA1A-GCBA	PRA1A-GBBA	PRA1A-GDBA	PRA1A-GECA

EXTERNAL PILOT AND REMOTE AIR

Gauges	Single pressure Regulator 14 end Same regulated pressure to ports 2 and 4	Single pressure Regulator 12 end Same regulated pressure to ports 2 and 4	Dual pressure Regulator 14 end Regulated pressure to port 4 *	Dual pressure Regulator 12 end Regulated pressure to port 2 *	Dual pressure Dual regulator Two regulated pressures to ports 2 and 4 *
No gauge	PRA1A-HAAA	PRA1A-HCAA	PRA1A-HBAA	PRA1A-HDAA	PRA1A-HEAA
Gauge parallel to regulator(s)	PRA1A-HADA	PRA1A-HCDA	PRA1A-HBDA	PRA1A-HDDA	PRA1A-HEEA
Gauge perpendicular to regulator(s)	PRA1A-HABA	PRA1A-HCBA	PRA1A-HBBA	PRA1A-HDBA	PRA1A-HECA

* - To be used with dual pressure valves.

Valve code is : MV-A1C-AX5X-PM-XYZZ (sgl. pressure ext. pilot)

Valve code is : MV-A1C-AX4X-PM-XYZZ (dual pressure ext. pilot)

Note : regulating range for above models is 0-120 PSI. For other ranges see technical data page.

Main valve body assembly must be external pilot model. Pilots are supplied internally from primary pressure in regulator block. Cannot field convert regulator block from Single Pressure to dual pressure. Body/Block to base mounting screw #35336.

ADJUSTMENT OPTIONS

PRA1A-xxxx

- Replace by A for slotted stem adjustment (internal pilot)
- Replace by B for slotted stem adjustment (external/remote air)
- Replace by K for slotted stem with locknut (internal pilot)
- Replace by L for slotted stem with locknut (external/remote air)

TECHNICAL DATA	
Fluid :	Compressed air, inert gases
Pressure range :	0 to 150 PSI
Regulating range :	0 to 120 PSI (other ranges see below)
Lubrication :	Not required, if used select a medium aniline point lubricant (between 180°F to 210°F)
Filtration :	40 μ
Temperature range :	0°F to 120°F (-18°C to 50°C)
Flow :	(1.0 C _v)

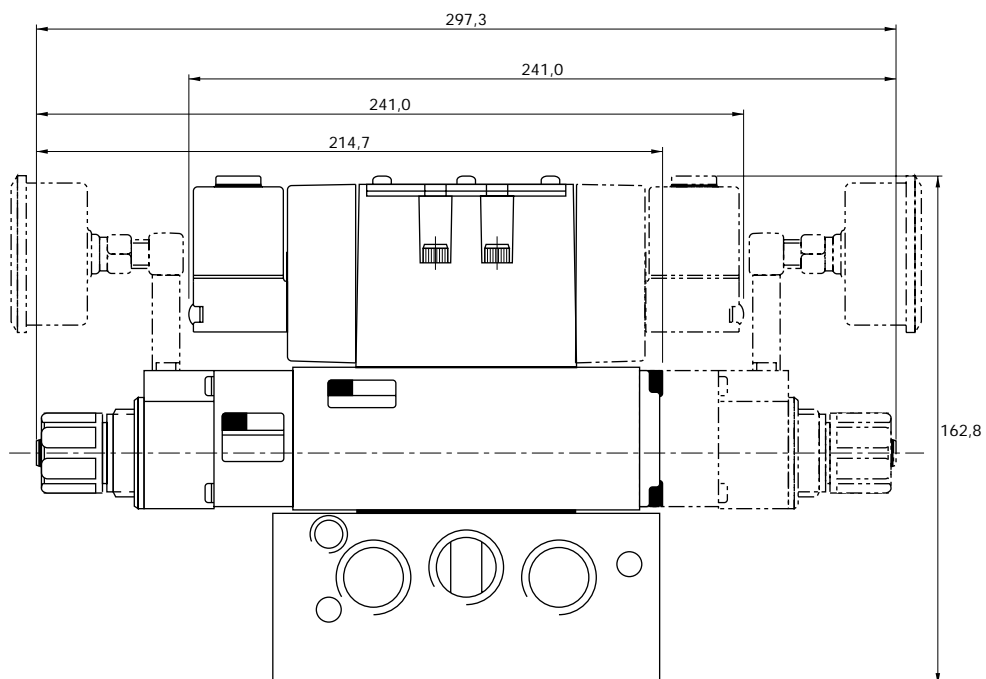
Spare parts :

- Pressure regulator (less sandwich block) : PRA1A-J0AA (KNOB), PRA1A-C0AA (SLOTTED STEM), PRA1A-M0AA (SLOTTED STEM WITH LOCKNUT).
- Gauges : N-82016-01 (0-120 PSI perpendicular)
N-82016-02 (0-120 PSI parallel)
N-82016-03 (0-80 PSI perpendicular)
N-82016-04 (0-80 PSI parallel)
N-82016-05 (0-30 PSI perpendicular)
N-82016-06 (0-30 PSI parallel)

Regulating range options : PRA1A-XXXA

- Replace by B - 0 to 80 PSI
- Replace by C - 0 to 30 PSI
- Replace by D - 0 to 120 PSI on "14" end
- 0 to 80 PSI on "12" end
- Replace by E - 0 to 120 PSI on "12" end
- 0 to 80 PSI on "14" end
- Replace by F - 0 to 120 PSI on "14" end
- 0 to 30 PSI on "12" end
- Replace by G - 0 to 120 PSI on "12" end
- 0 to 30 PSI on "14" end
- Replace by H - 0 to 80 PSI on "14" end
- 0 to 30 PSI on "12" end
- Replace by J - 0 to 80 PSI on "12" end
- 0 to 30 PSI on "14" end

DIMENSIONS Dimensions shown are metric (mm)



Sandwich pressure regulator with air pilot adjust.

OPERATIONAL BENEFITS

1. Easy mounting : saves on installation costs in comparison with inline regulators.
2. Allows to have compact, all-included units.
3. Large orifice provides high flow.
4. Various functions available.
5. Simple, reliable and solid design.



HOW TO ORDER

INTERNAL PILOT

Gauges	Single pressure Regulator 14 end Same regulated pressure to ports 2 and 4	Single pressure Regulator 12 end Same regulated pressure to ports 2 and 4	Dual pressure Regulator 14 end Regulated pressure to port 4	Dual pressure Regulator 12 end Regulated pressure to port 2	Dual pressure Dual regulator Two regulated pressures to ports 2 and 4
No gauge	PRA1A-DAAA	PRA1A-DCAA	PRA1A-DBAA	PRA1A-DDAA	PRA1A-DEAA
Gauge parallel to regulator(s)	PRA1A-DADA	PRA1A-DCDA	PRA1A-DBDA	PRA1A-DDDA	PRA1A-DEEA
Gauge perpendicular to regulator(s)	PRA1A-DABA	PRA1A-DCBA	PRA1A-DBBA	PRA1A-DDBA	PRA1A-DECA

EXTERNAL PILOT AND REMOTE AIR

Gauges	Single pressure Regulator 14 end Same regulated pressure to ports 2 and 4	Single pressure Regulator 12 end Same regulated pressure to ports 2 and 4	Dual pressure Regulator 14 end Regulated pressure to port 4	Dual pressure Regulator 12 end Regulated pressure to port 2	Dual pressure Dual regulator Two regulated pressures to ports 2 and 4
No gauge	PRA1A-EAAA	PRA1A-ECAA	PRA1A-EBAA	PRA1A-EDAA	PRA1A-EEAA
Gauge parallel to regulator(s)	PRA1A-EADA	PRA1A-ECDA	PRA1A-EBDA	PRA1A-EDDA	PRA1A-EEEA
Gauge perpendicular to regulator(s)	PRA1A-EABA	PRA1A-ECBA	PRA1A-EBBA	PRA1A-EDBA	PRA1A-EECA

* - To be used with dual pressure valves.
 Valve code is : MV-A1C-AX5X-PM-XXYYZ (sgl. pressure ext. pilot)
 Valve code is : MV-A1C-AX4X-PM-XXYYZ (dual pressure ext. pilot)

Main valve body assembly must be external pilot model. Pilots are supplied internally from primary pressure in regulator block. Cannot field convert regulator block from Single Pressure to dual pressure. Body/Block to base mounting screw #35336.

TECHNICAL DATA

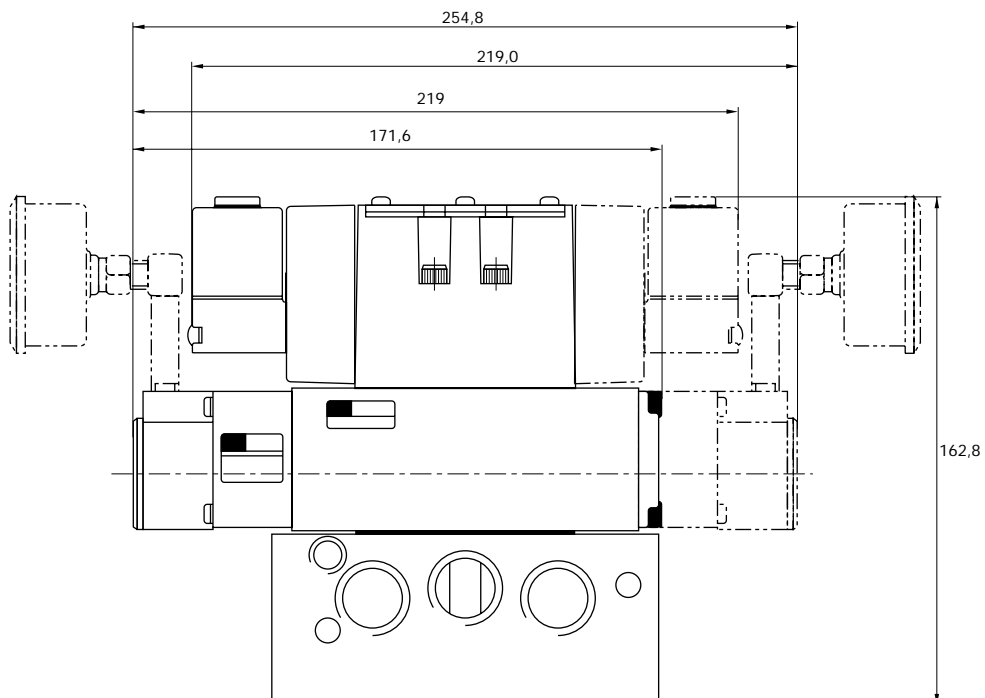
Fluid :	Compressed air, inert gases
Pressure range :	0 to 150 PSI
Regulating range :	0 to 120 PSI
Lubrication :	Not required, if used select a medium aniline point lubricant (between 180°F to 210°F)
Filtration :	40 μ
Temperature range :	0°F to 120°F (-18°C to 50°C)
Flow :	(1.0 C _v)

Spare parts :

- Pressure regulator (less sandwich block) : PRA1A-FOAA.
- Gauges : N-82016-01 (0-120 PSI perpendicular)
N-82016-02 (0-120 PSI parallel)

DIMENSIONS

Dimensions shown are metric (mm)



Sandwich pressure regulator with manual adjust knob.

OPERATIONAL BENEFITS

1. Easy mounting : saves on installation costs in comparison with inline regulators.
2. Allows to have compact, all-included units.
3. Large orifice provides high flow.
4. Various functions available.
5. Simple, reliable and solid design.



HOW TO ORDER

INTERNAL PILOT

Gauges	Single pressure Regulator 14 end Same regulated pressure to ports 2 and 4	Single pressure Regulator 12 end Same regulated pressure to ports 2 and 4	Dual pressure Regulator 14 end Regulated pressure to port 4 *	Dual pressure Regulator 12 end Regulated pressure to port 2 *	Dual pressure Dual regulator Two regulated pressures to ports 2 and 4 *
No gauge	PRA2D-1AAA	PRA2D-1EAA	PRA2D-1BAA	PRA2D-1FAA	PRA2D-1JAA
Non-filled gauge on regulator(s)	PRA2D-1ADA	PRA2D-1EDA	PRA2D-1BDA	PRA2D-1FDA	PRA2D-1JEA
Non-filled gauge opposite to regulator	PRA2D-1CDA	PRA2D-1GDA	PRA2D-1DDA	PRA2D-1HDA	-----
Glycerine filled gauge on regulator(s)	PRA2D-1ABA	PRA2D-1EBA	PRA2D-1BBA	PRA2D-1FBA	PRA2D-1JCA
Glycerine filled gauge opposite to regulator	PRA2D-1CBA	PRA2D-1GBA	PRA2D-1DBA	PRA2D-1HBA	-----

EXTERNAL PILOT AND REMOTE AIR

Gauges	Single pressure Regulator 14 end Same regulated pressure to ports 2 and 4	Single pressure Regulator 12 end Same regulated pressure to ports 2 and 4	Dual pressure Regulator 14 end Regulated pressure to port 4 *	Dual pressure Regulator 12 end Regulated pressure to port 2 *	Dual pressure Dual regulator Two regulated pressures to ports 2 and 4 *
No gauge	PRA2D-2AAA	PRA2D-2EAA	PRA2D-2BAA	PRA2D-2FAA	PRA2D-2JAA
Non-filled gauge on regulator(s)	PRA2D-2ADA	PRA2D-2EDA	PRA2D-2BDA	PRA2D-2FDA	PRA2D-2JEA
Non-filled gauge opposite to regulator	PRA2D-2CDA	PRA2D-2GDA	PRA2D-2DDA	PRA2D-2HDA	-----
Glycerine filled gauge on regulator(s)	PRA2D-2ABA	PRA2D-2EBA	PRA2D-2BBA	PRA2D-2FBA	PRA2D-2JCA
Glycerine filled gauge opposite to regulator	PRA2D-2CBA	PRA2D-2GBA	PRA2D-2DBA	PRA2D-2HBA	-----

* - To be used with dual pressure valves.

Valve code is : MV-A2B-AX5X-PM-XXYZZ (sgl. pressure ext. pilot)

Valve code is : MV-A2B-AX4X-PM-XXYZZ (dual pressure ext. pilot)

Note : regulating range for above models is 0-150 PSI.

For other ranges see technical data page.

Main valve body assembly must be external pilot model. Pilots are supplied internally from primary pressure in regulator block. Cannot field convert regulator block from Single Pressure to dual pressure. Body/Block to base mounting screw #19177.

ADJUSTMENT OPTIONS

PRA2D-xxxx

- Replace by A for slotted stem adjustment (internal pilot)
- Replace by B for slotted stem adjustment (external pilot)
- Replace by D for slotted stem with locknut (internal pilot)
- Replace by E for slotted stem with locknut (external pilot)

TECHNICAL DATA	
Fluid :	Compressed air, inert gases
Pressure range :	0 to 150 PSI
Regulating range :	0 to 150 PSI (other ranges see below)
Lubrication :	Not required, if used select a medium aniline point lubricant (between 180°F to 210°F)
Filtration :	40 μ
Temperature range :	0°F to 120°F (-18°C to 50°C)
Flow :	(2.3 C _v)

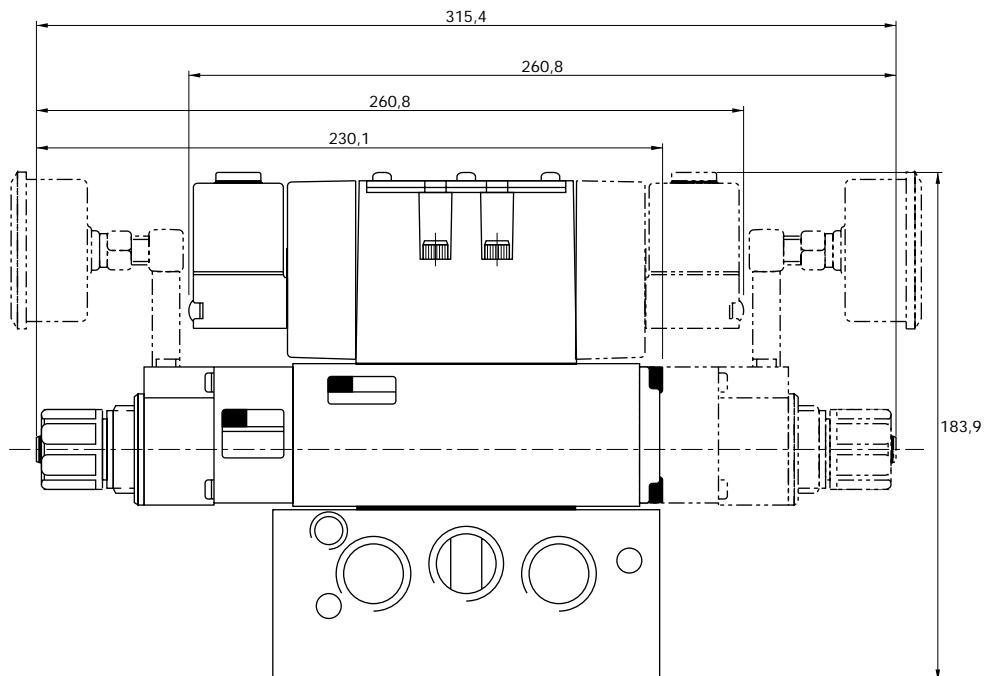
Spare parts :

- Pressure regulator (less sandwich block) : PRA2D-30AA (KNOB), PRA2D-C0AA (SLOTTED STEM), PRA2D-F0AA (SLOTTED STEM WITH LOCKNUT).
- Gauges :
 - Glycerine filled : N-62015-01
 - Non filled : N-62016-01

Regulating range options : PRA2D-XXXA

- Replace by B - 0 to 100 PSI
- Replace by C - 0 to 45 PSI

DIMENSIONS Dimensions shown are metric (mm)



Sandwich pressure regulator with air pilot adjust.

OPERATIONAL BENEFITS

1. Easy mounting : saves on installation costs in comparison with inline regulators.
2. Allows to have compact, all-included units.
3. Large orifice provides high flow.
4. Various functions available.
5. Simple, reliable and solid design.



HOW TO ORDER

INTERNAL PILOT

Gauges	Single pressure Regulator 14 end Same regulated pressure to ports 2 and 4	Single pressure Regulator 12 end Same regulated pressure to ports 2 and 4	Dual pressure Regulator 14 end Regulated pressure to port 4 *	Dual pressure Regulator 12 end Regulated pressure to port 2 *	Dual pressure Dual regulator Two regulated pressures to ports 2 and 4 *
No gauge	PRA2D-4AAA	PRA2D-4EAA	PRA2D-4BAA	PRA2D-4FAA	PRA2D-4JAA
Non-filled gauge on regulator(s)	PRA2D-4ADA	PRA2D-4EDA	PRA2D-4BDA	PRA2D-4FDA	PRA2D-4JEA
Non-filled gauge opposite to regulator	PRA2D-4CDA	PRA2D-4GDA	PRA2D-4DDA	PRA2D-4HDA	-----
Glycerine filled gauge on regulator(s)	PRA2D-4ABA	PRA2D-4EBA	PRA2D-4BBA	PRA2D-4FBA	PRA2D-4JCA
Glycerine filled gauge opposite to regulator	PRA2D-4CBA	PRA2D-4GBA	PRA2D-4DBA	PRA2D-4HBA	-----

EXTERNAL PILOT AND REMOTE AIR

Gauges	Single pressure Regulator 14 end Same regulated pressure to ports 2 and 4	Single pressure Regulator 12 end Same regulated pressure to ports 2 and 4	Dual pressure Regulator 14 end Regulated pressure to port 4 *	Dual pressure Regulator 12 end Regulated pressure to port 2 *	Dual pressure Dual regulator Two regulated pressures to ports 2 and 4 *
No gauge	PRA2D-5AAA	PRA2D-5EAA	PRA2D-5BAA	PRA2D-5FAA	PRA2D-5JAA
Non-filled gauge on regulator(s)	PRA2D-5ADA	PRA2D-5EDA	PRA2D-5BDA	PRA2D-5FDA	PRA2D-5JEA
Non-filled gauge opposite to regulator	PRA2D-5CDA	PRA2D-5GDA	PRA2D-5DDA	PRA2D-5HDA	-----
Glycerine filled gauge on regulator(s)	PRA2D-5ABA	PRA2D-5EBA	PRA2D-5BBA	PRA2D-5FBA	PRA2D-5JCA
Glycerine filled gauge opposite to regulator	PRA2D-5CBA	PRA2D-5GBA	PRA2D-5DBA	PRA2D-5HBA	-----

* - To be used with dual pressure valves.

Valve code is : MV-A2B-AX5X-PM-XXYZZ (sgl. pressure ext. pilot)

Valve code is : MV-A2B-AX4X-PM-XXYZZ (dual pressure ext. pilot)

Main valve body assembly must be external pilot model. Pilots are supplied internally from primary pressure in regulator block. Cannot field convert regulator block from Single Pressure to dual pressure. Body/Block to base mounting screw #19177.

TECHNICAL DATA

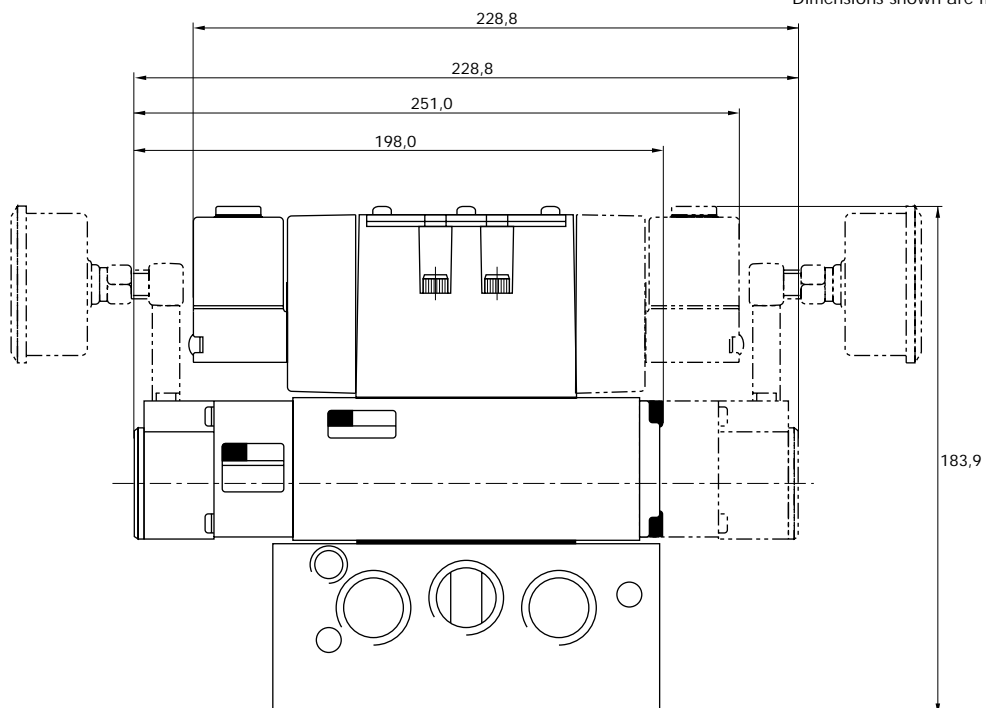
Fluid :	Compressed air, inert gases
Pressure range :	0 to 150 PSI
Regulating range :	0 to 150 PSI
Lubrication :	Not required, if used select a medium aniline point lubricant (between 180°F to 210°F)
Filtration :	40 μ
Temperature range :	0°F to 120°F (-18°C to 50°C)
Flow :	(2.3 C _v)

Spare parts :

- Pressure regulator (less sandwich block) : PRA2D-60AA.
- Gauges : • Glycerine filled : N-62015-01
• Non filled : N-62016-01

DIMENSIONS

Dimensions shown are metric (mm)



Sandwich pressure regulator with manual adjust knob.

OPERATIONAL BENEFITS

1. Easy mounting : saves on installation costs in comparison with inline regulators.
2. Allows to have compact, all-included units.
3. Large orifice provides high flow.
4. Various functions available.
5. Simple, reliable and solid design.



HOW TO ORDER

INTERNAL PILOT

Gauges	Single pressure Regulator 14 end Same regulated pressure to ports 2 and 4	Single pressure Regulator 12 end Same regulated pressure to ports 2 and 4	Dual pressure Regulator 14 end Regulated pressure to port 4 *	Dual pressure Regulator 12 end Regulated pressure to port 2 *	Dual pressure Dual regulator Two regulated pressures to ports 2 and 4 *
No gauge	PRA3C-1AAA	PRA3C-1EAA	PRA3C-1BAA	PRA3C-1FAA	PRA3C-1JAA
Non-filled gauge on regulator(s)	PRA3C-1ADA	PRA3C-1EDA	PRA3C-1BDA	PRA3C-1FDA	PRA3C-1JEA
Non-filled gauge opposite to regulator	PRA3C-1CDA	PRA3C-1GDA	PRA3C-1DDA	PRA3C-1HDA	-----
Glycerine filled gauge on regulator(s)	PRA3C-1ABA	PRA3C-1EBA	PRA3C-1BBA	PRA3C-1FBA	PRA3C-1JCA
Glycerine filled gauge opposite to regulator	PRA3C-1CBA	PRA3C-1GBA	PRA3C-1DBA	PRA3C-1HBA	-----

EXTERNAL PILOT AND REMOTE AIR

Gauges	Single pressure Regulator 14 end Same regulated pressure to ports 2 and 4	Single pressure Regulator 12 end Same regulated pressure to ports 2 and 4	Dual pressure Regulator 14 end Regulated pressure to port 4 *	Dual pressure Regulator 12 end Regulated pressure to port 2 *	Dual pressure Dual regulator Two regulated pressures to ports 2 and 4 *
No gauge	PRA3C-2AAA	PRA3C-2EAA	PRA3C-2BAA	PRA3C-2FAA	PRA3C-2JAA
Non-filled gauge on regulator(s)	PRA3C-2ADA	PRA3C-2EDA	PRA3C-2BDA	PRA3C-2FDA	PRA3C-2JEA
Non-filled gauge opposite to regulator	PRA3C-2CDA	PRA3C-2GDA	PRA3C-2DDA	PRA3C-2HDA	-----
Glycerine filled gauge on regulator(s)	PRA3C-2ABA	PRA3C-2EBA	PRA3C-2BBA	PRA3C-2FBA	PRA3C-2JCA
Glycerine filled gauge opposite to regulator	PRA3C-2CBA	PRA3C-2GBA	PRA3C-2DBA	PRA3C-2HBA	-----

* - To be used with dual pressure valves.

Valve code is : MV-A3B-AX5X-PM-XXYZZ (sgl. pressure ext. pilot)

Valve code is : MV-A3B-AX4X-PM-XXYZZ (dual pressure ext. pilot)

Note : regulating range for above models is 0-150 PSI.

For other ranges see technical data page.

Main valve body assembly must be external pilot model. Pilots are supplied internally from primary pressure in regulator block. Cannot field convert regulator block from Single Pressure to dual pressure. Body/Block to base mounting screw #35418.

ADJUSTMENT OPTIONS

PRA3C-xxxx

- Replace by A for slotted stem adjustment (internal pilot)
- Replace by B for slotted stem adjustment (external pilot)
- Replace by D for slotted stem with locknut (internal pilot)
- Replace by E for slotted stem with locknut (external pilot)

TECHNICAL DATA	
Fluid :	Compressed air, inert gases
Pressure range :	0 to 150 PSI
Regulating range :	0 to 150 PSI (other ranges see below)
Lubrication :	Not required, if used select a medium aniline point lubricant (between 180°F to 210°F)
Filtration :	40 μ
Temperature range :	0°F to 120°F (-18°C to 50°C)
Flow :	(5.4 C _v)

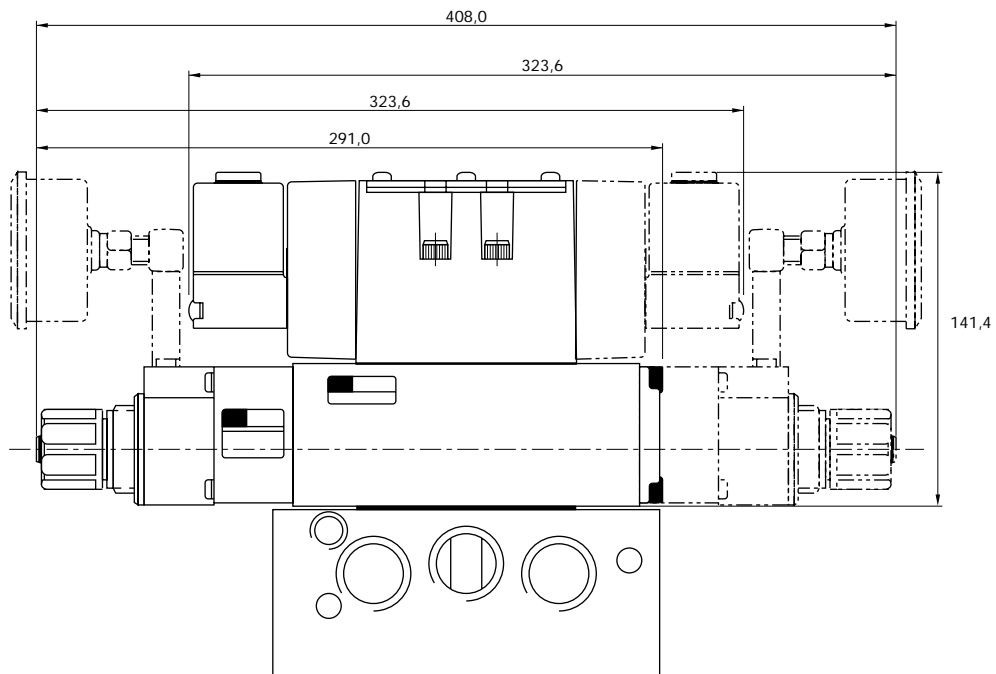
Spare parts :

- Pressure regulator (less sandwich block) : PRA3C-30AA (KNOB), PRA3C-C0AA (SLOTTED STEM), PRA3C-F0AA (SLOTTED STEM WITH LOCKNUT).
- Gauges : • Glycerine filled : N-62015-01
• Non filled : N-62016-01

Regulating pressure options :

- PRA3C-XXXA
- Replace by B - 0 to 100 PSI
 - Replace by C - 0 to 45 PSI

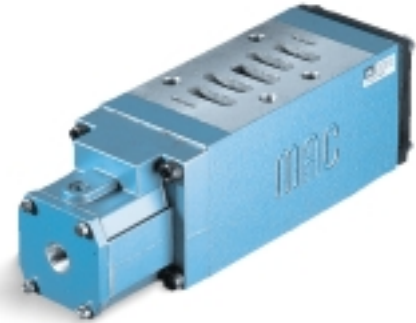
DIMENSIONS Dimensions shown are metric (mm)



Sandwich pressure regulator with air pilot adjust.

OPERATIONAL BENEFITS

1. Easy mounting : saves on installation costs in comparison with inline regulators.
2. Allows to have compact, all-included units.
3. Large orifice provides high flow.
4. Various functions available.
5. Simple, reliable and solid design.



HOW TO ORDER

INTERNAL PILOT

Gauges	Single pressure Regulator 14 end Same regulated pressure to ports 2 and 4	Single pressure Regulator 12 end Same regulated pressure to ports 2 and 4	Dual pressure Regulator 14 end Regulated pressure to port 4	Dual pressure Regulator 12 end Regulated pressure to port 2	Dual pressure Dual regulator Two regulated pressures to ports 2 and 4
No gauge	PRA3C-4AAA	PRA3C-4EAA	PRA3C-4BAA	PRA3C-4FAA	PRA3C-4JAA
Non-filled gauge on regulator(s)	PRA3C-4ADA	PRA3C-4EDA	PRA3C-4BDA	PRA3C-4FDA	PRA3C-4JEA
Non-filled gauge opposite to regulator	PRA3C-4CDA	PRA3C-4GDA	PRA3C-4DDA	PRA3C-4HDA	-----
Glycerine filled gauge on regulator(s)	PRA3C-4ABA	PRA3C-4EBA	PRA3C-4BBA	PRA3C-4FBA	PRA3C-4JCA
Glycerine filled gauge opposite to regulator	PRA3C-4CBA	PRA3C-4GBA	PRA3C-4DBA	PRA3C-4HBA	-----

EXTERNAL PILOT AND REMOTE AIR

Gauges	Single pressure Regulator 14 end Same regulated pressure to ports 2 and 4	Single pressure Regulator 12 end Same regulated pressure to ports 2 and 4	Dual pressure Regulator 14 end Regulated pressure to port 4	Dual pressure Regulator 12 end Regulated pressure to port 2	Dual pressure Dual regulator Two regulated pressures to ports 2 and 4
No gauge	PRA3C-5AAA	PRA3C-5EAA	PRA3C-5BAA	PRA3C-5FAA	PRA3C-5JAA
Non-filled gauge on regulator(s)	PRA3C-5ADA	PRA3C-5EDA	PRA3C-5BDA	PRA3C-5FDA	PRA3C-5JEA
Non-filled gauge opposite to regulator	PRA3C-5CDA	PRA3C-5GDA	PRA3C-5DDA	PRA3C-5HDA	-----
Glycerine filled gauge on regulator(s)	PRA3C-5ABA	PRA3C-5EBA	PRA3C-5BBA	PRA3C-5FBA	PRA3C-5JCA
Glycerine filled gauge opposite to regulator	PRA3C-5CBA	PRA3C-5GBA	PRA3C-5DBA	PRA3C-5HBA	-----

* - To be used with dual pressure valves.

Valve code is : MV-A3B-AX5X-PM-XXYZZ (sgl. pressure ext. pilot)

Valve code is : MV-A3B-AX4X-PM-XXYZZ (dual pressure ext. pilot)

Main valve body assembly must be external pilot model. Pilots are supplied internally from primary pressure in regulator block. Cannot field convert regulator block from Single Pressure to dual pressure. Body/Block to base mounting screw #35418.

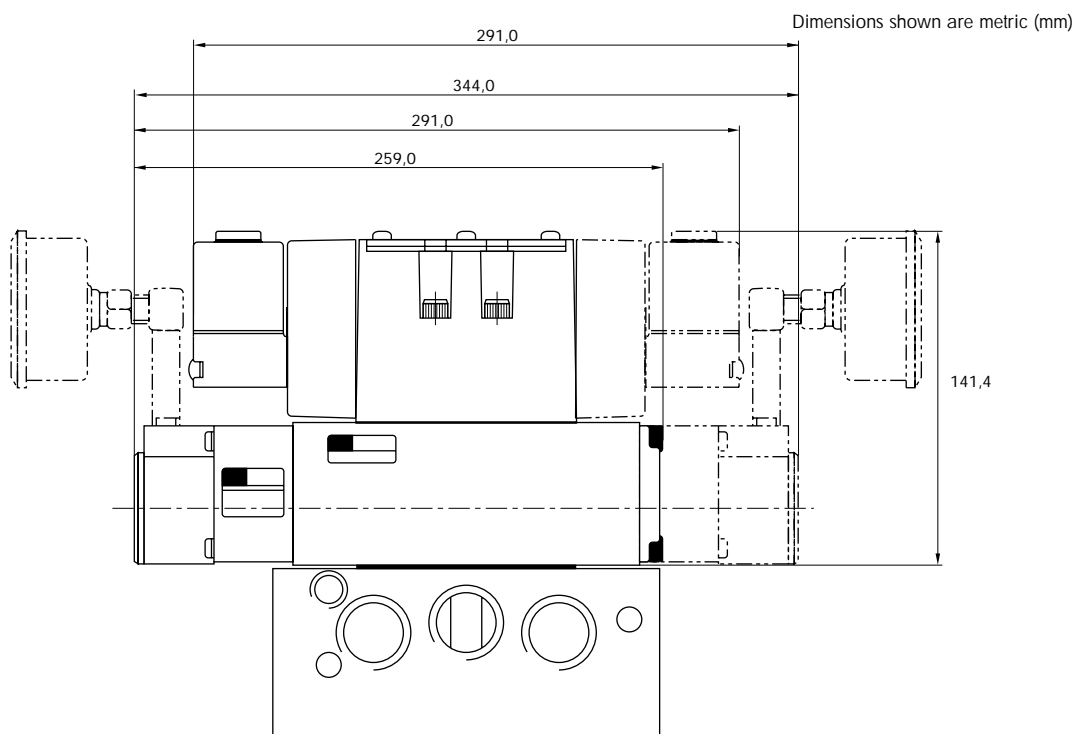
TECHNICAL DATA

Fluid :	Compressed air, inert gases
Pressure range :	0 to 150 PSI
Regulating range :	0 to 150 PSI
Lubrication :	Not required, if used select a medium aniline point lubricant (between 180°F to 210°F)
Filtration :	40 μ
Temperature range :	0°F to 120°F (-18°C to 50°C)
Flow :	(5.4 C _v)

Spare parts :

- Pressure regulator (less sandwich block) : PRA3C-60AA.
- Gauges :
 - Glycerine filled : N-62015-01
 - Non filled : N-62016-01

DIMENSIONS



Sandwich pressure regulator with manual adjust knob.

OPERATIONAL BENEFITS

1. Easy mounting : saves on installation costs in comparison with inline regulators.
2. Allows to have compact, all-included units.
3. Large orifice provides high flow.
4. Various functions available.
5. Simple, reliable and solid design.



HOW TO ORDER

INTERNAL PILOT REGULATORS

Gauges	Single pressure Regulator A end Same regulated pressure to ports A and B	Single pressure Regulator B end Same regulated pressure to ports A and B	Dual pressure Regulator A end Regulated pressure to port A *	Dual pressure Regulator B end Regulated pressure to port B *	Dual pressure Dual regulator Two regulated pressures to ports A and B *
No gauge	PR125A-GCAA	PR125A-GAAA	PR125A-GDAA	PR125A-GBAA	PR125A-GEAA
Gauge parallel to regulator(s)	PR125A-GCDA	PR125A-GADA	PR125A-GDDA	PR125A-GBDA	PR125A-GEEA
Gauge perpendicular to regulator(s)	PR125A-GCBA	PR125A-GABA	PR125A-GDBA	PR125A-GBBA	PR125A-GECA

EXTERNAL PILOT REGULATORS

Gauges	Single pressure Regulator A end Same regulated pressure to ports A and B	Single pressure Regulator B end Same regulated pressure to ports A and B	Dual pressure Regulator A end Regulated pressure to port A *	Dual pressure Regulator B end Regulated pressure to port B *	Dual pressure Dual regulator Two regulated pressures to ports A and B *
No gauge	PR125A-HCAA	PR125A-HAAA	PR125A-HDAA	PR125A-HBAA	PR125A-HEAA
Gauge parallel to regulator(s)	PR125A-HCDA	PR125A-HADA	PR125A-HDDA	PR125A-HBDA	PR125A-HEEA
Gauge perpendicular to regulator(s)	PR125A-HCBA	PR125A-HABA	PR125A-HDBA	PR125A-HBBA	PR125A-HECA

* - To be used with dual pressure valves.

Valve code is : MAC125A-VXX4-PM-XXYZZ (valves must be external pilot models for either single or dual pressure valves)

Note : regulating range for above models is 0-120 PSI. For other ranges see technical data page. Photo shown with slotted stem.

ADJUSTMENT OPTIONS

- PR125A-xxxx
- Replace by A for internal pilot with slotted stem
 - Replace by B for external pilot with slotted stem
 - Replace by K for internal pilot with locking slotted stem
 - Replace by L for external pilot with locking slotted stem

TECHNICAL DATA

Fluid :	Compressed air, inert gases
Pressure range :	0 to 150 PSI
Regulating range :	0 to 120 PSI (other ranges see below)
Lubrication :	Not required, if used select a medium aniline point lubricant (between 180°F to 210°F)
Filtration :	40 μ
Temperature range :	0°F to 120°F (-18°C to 50°C)
Flow :	(1.8 C _v)

Spare parts :

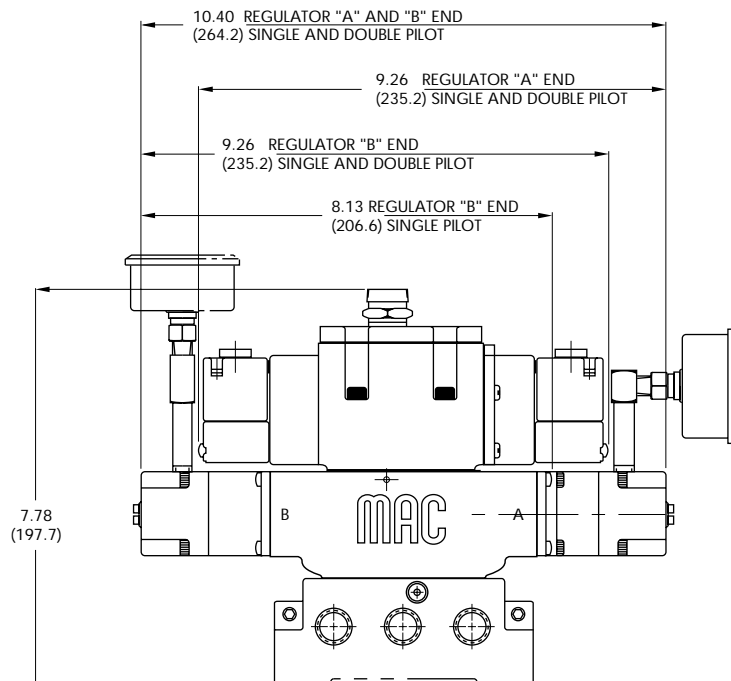
- Pressure regulator (less sandwich block) : PR125A-J0AA (KNOB), PR125A-C0AA (SLOTTED STEM), PR125A-M0AA (LOCKING SLOTTED STEM).
- Gauges : N-82016-01 (0-120 PSI perpendicular)
 N-82016-02 (0-120 PSI parallel)
 N-82016-03 (0-80 PSI perpendicular)
 N-82016-04 (0-80 PSI parallel)
 N-82016-05 (0-30 PSI perpendicular)
 N-82016-06 (0-30 PSI parallel)

Regulating range options : PR125A-XXXX

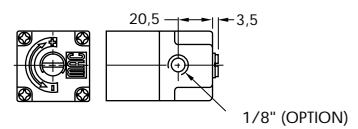
- Replace by B - 0 to 80 PSI
- Replace by C - 0 to 30 PSI
- Replace by D - 0 to 120 PSI on "A" end
 - 0 to 80 PSI on "B" end
- Replace by E - 0 to 120 PSI on "B" end
 - 0 to 80 PSI on "A" end
- Replace by F - 0 to 120 PSI on "A" end
 - 0 to 30 PSI on "B" end
- Replace by G - 0 to 120 PSI on "B" end
 - 0 to 30 PSI on "A" end
- Replace by H - 0 to 80 PSI on "A" end
 - 0 to 30 PSI on "B" end
- Replace by J - 0 to 80 PSI on "B" end
 - 0 to 30 PSI on "A" end

DIMENSIONS

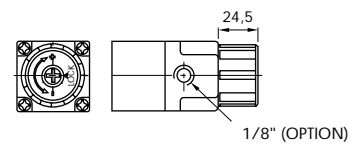
Dimensions shown are metric (mm)



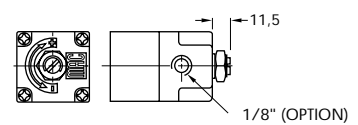
SLOTTED STEM



LOCKING KNOB



LOCKING SLOTTED STEM



Sandwich pressure regulator with air pilot adjust.

OPERATIONAL BENEFITS

1. Easy mounting : saves on installation costs in comparison with inline regulators.
2. Allows to have compact, all-included units.
3. Large orifice provides high flow.
4. Various functions available.
5. Simple, reliable and solid design.



HOW TO ORDER

INTERNAL PILOT REGULATORS

Gauges	Single pressure Regulator A end Same regulated pressure to ports A and B	Single pressure Regulator B end Same regulated pressure to ports A and B	Dual pressure Regulator A end Regulated pressure to port A *	Dual pressure Regulator B end Regulated pressure to port B *	Dual pressure Dual regulator Two regulated pressures to ports A and B *
No gauge	PR125A-DCAA	PR125A-DAAA	PR125A-DDAA	PR125A-DBAA	PR125A-DEAA
Gauge parallel to regulator(s)	PR125A-DCDA	PR125A-DADA	PR125A-DDDA	PR125A-DBDA	PR125A-DEEA
Gauge perpendicular to regulator(s)	PR125A-DCBA	PR125A-DABA	PR125A-DDBA	PR125A-DBBA	PR125A-DECA

EXTERNAL PILOT REGULATORS

Gauges	Single pressure Regulator A end Same regulated pressure to ports A and B	Single pressure Regulator B end Same regulated pressure to ports A and B	Dual pressure Regulator A end Regulated pressure to port A *	Dual pressure Regulator B end Regulated pressure to port B *	Dual pressure Dual regulator Two regulated pressures to ports A and B *
No gauge	PR125A-ECAA	PR125A-EAAA	PR125A-EDAA	PR125A-EBAA	PR125A-EEAA
Gauge parallel to regulator(s)	PR125A-ECDA	PR125A-EADA	PR125A-EDDA	PR125A-EBDA	PR125A-EEEA
Gauge perpendicular to regulator(s)	PR125A-ECBA	PR125A-EABA	PR125A-EDBA	PR125A-EBBA	PR125A-EECA

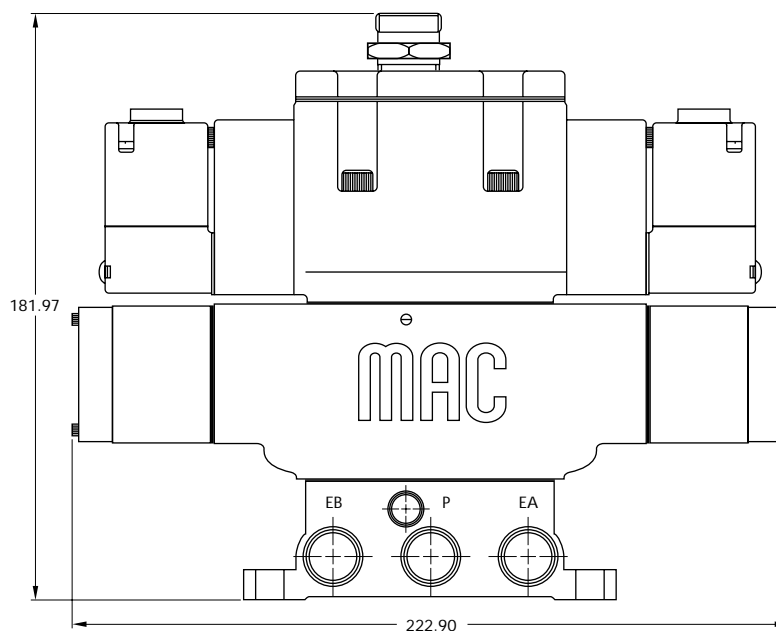
* - To be used with dual pressure valves.

Valve code is : MAC125A-VXX4-PM-XXYZZ (valves must be external pilot models for either single or dual pressure valves)

TECHNICAL DATA	
Fluid :	Compressed air, inert gases
Pressure range :	0 to 150 PSI
Regulating range :	0 to 120 PSI
Lubrication :	Not required, if used select a medium aniline point lubricant (between 180°F to 210°F)
Filtration :	40 μ
Temperature range :	0°F to 120°F (-18°C to 50°C)
Flow :	(1.8 C _v)

- Spare parts :
- Pressure regulator (less sandwich block) : PR125A-F0AA
 - Gauges : N-82016-01 (0-120 PSI perpendicular)
N-82016-02 (0-120 PSI parallel)

DIMENSIONS Dimensions shown are metric (mm)



Sandwich pressure regulator with manual adjust knob.

OPERATIONAL BENEFITS

1. Easy mounting : saves on installation costs in comparison with inline regulators.
2. Allows to have compact, all-included units.
3. Large orifice provides high flow.
4. Various functions available.
5. Simple, reliable and solid design.



HOW TO ORDER

INTERNAL PILOT REGULATORS

Gauges	Single pressure Regulator A end Same regulated pressure to ports A and B	Single pressure Regulator B end Same regulated pressure to ports A and B	Dual pressure Regulator A end Regulated pressure to port A *	Dual pressure Regulator B end Regulated pressure to port B *	Dual pressure Dual regulator Two regulated pressures to ports A and B *
No gauge	PR250B-ACAA	PR250B-AAAA	PR250B-ADAA	PR250B-ABAA	PR250B-AEAA
Gauge parallel to regulator(s)	PR250B-ACDA	PR250B-ADAD	PR250B-ADDA	PR250B-ABDA	PR250B-AEEA
Gauge perpendicular to regulator(s)	PR250B-ACBA	PR250B-AABA	PR250B-ADBA	PR250B-ABBA	PR250B-AECA

EXTERNAL PILOT REGULATORS

Gauges	Single pressure Regulator A end Same regulated pressure to ports A and B	Single pressure Regulator B end Same regulated pressure to ports A and B	Dual pressure Regulator A end Regulated pressure to port A *	Dual pressure Regulator B end Regulated pressure to port B *	Dual pressure Dual regulator Two regulated pressures to ports A and B *
No gauge	PR250B-BCAA	PR250B-BAAA	PR250B-BDAA	PR250B-BBAA	PR250B-BEAA
Gauge parallel to regulator(s)	PR250B-BCDA	PR250B-BADA	PR250B-BDDA	PR250B-BBDA	PR250B-BEEA
Gauge perpendicular to regulator(s)	PR250B-BCBA	PR250B-BABA	PR250B-BDBA	PR250B-BBBA	PR250B-BECA

* - To be used with dual pressure valves.

Valve code is : MAC250A-VXX4-PM-XYZZ (valves must be external pilot models for either single or dual pressure valves)

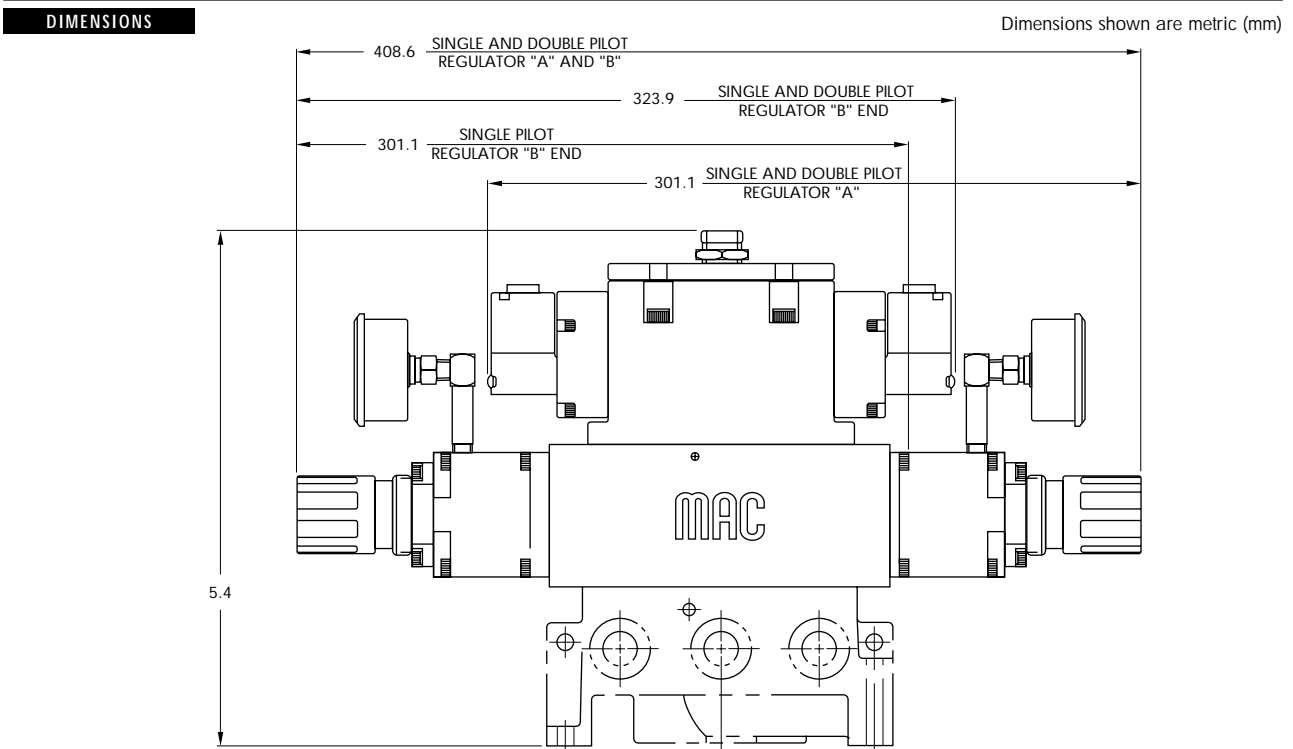
Note : regulating pressure range for above models is 0-120 PSI. For other ranges see technical data page.

TECHNICAL DATA	
Fluid :	Compressed air, inert gases
Pressure range :	0 to 150 PSI
Regulating range :	0 to 120 PSI (other ranges see below)
Lubrication :	Not required, if used select a medium aniline point lubricant (between 180°F to 210°F)
Filtration :	40 μ
Temperature range :	0°F to 120°F (-18°C to 50°C)
Flow :	(4.7 C _v)

- Spare parts :
- Pressure regulator (less sandwich block) : PR250B-C0AA (KNOB)
 - Gauges : • N-82016-01 (perpendicular)
• N-82016-02 (parallel)

Regulating range options : PR250B-XXXX

- Replace by B - 0 to 100 PSI
- Replace by C - 0 to 45 PSI



Sandwich pressure regulator with air pilot adjust.

OPERATIONAL BENEFITS

1. Easy mounting : saves on installation costs in comparison with inline regulators.
2. Allows to have compact, all-included units.
3. Large orifice provides high flow.
4. Various functions available.
5. Simple, reliable and solid design.



HOW TO ORDER

INTERNAL PILOT REGULATORS

Gauges	Single pressure Regulator A end Same regulated pressure to ports A and B	Single pressure Regulator B end Same regulated pressure to ports A and B	Dual pressure Regulator A end Regulated pressure to port A *	Dual pressure Regulator B end Regulated pressure to port B *	Dual pressure Dual regulator Two regulated pressures to ports A and B *
No gauge	PR250B-DCAA	PR250B-DAAA	PR250B-DDAA	PR250B-DBAA	PR250B-DEAA
Gauge parallel to regulator(s)	PR250B-DCDA	PR250B-DDAD	PR250B-DDDA	PR250B-DBDA	PR250B-DEEA
Gauge perpendicular to regulator(s)	PR250B-DCBA	PR250B-DABA	PR250B-DDBA	PR250B-DBBA	PR250B-DECA

EXTERNAL PILOT REGULATORS

Gauges	Single pressure Regulator A end Same regulated pressure to ports A and B	Single pressure Regulator B end Same regulated pressure to ports A and B	Dual pressure Regulator A end Regulated pressure to port A *	Dual pressure Regulator B end Regulated pressure to port B *	Dual pressure Dual regulator Two regulated pressures to ports A and B *
No gauge	PR250B-ECAA	PR250B-EAAA	PR250B-EDAA	PR250B-EBAA	PR250B-EEAA
Gauge parallel to regulator(s)	PR250B-ECDA	PR250B-EADA	PR250B-EDDA	PR250B-EBDA	PR250B-EEEA
Gauge perpendicular to regulator(s)	PR250B-ECBA	PR250B-EABA	PR250B-EDBA	PR250B-EBBA	PR250B-EECA

* - To be used with dual pressure valves.

Valve code is : MAC250A-VXX4-PM-XXYYZ (valves must be external pilot models for both single or dual pressure valves)

TECHNICAL DATA	
Fluid :	Compressed air, inert gases
Pressure range :	0 to 150 PSI
Regulating range :	0 to 120 PSI
Lubrication :	Not required, if used select a medium aniline point lubricant (between 180°F to 210°F)
Filtration :	40 μ
Temperature range :	0°F to 120°F (-18°C to 50°C)
Flow :	(4.7 C _v)

Spare parts :

- Pressure regulator (less sandwich block) : PR250B-FOAA
- Gauges : N-82016-01 (0-120 PSI perpendicular)
N-82016-02 (0-120 PSI parallel)

DIMENSIONS Dimensions shown are metric (mm)

